

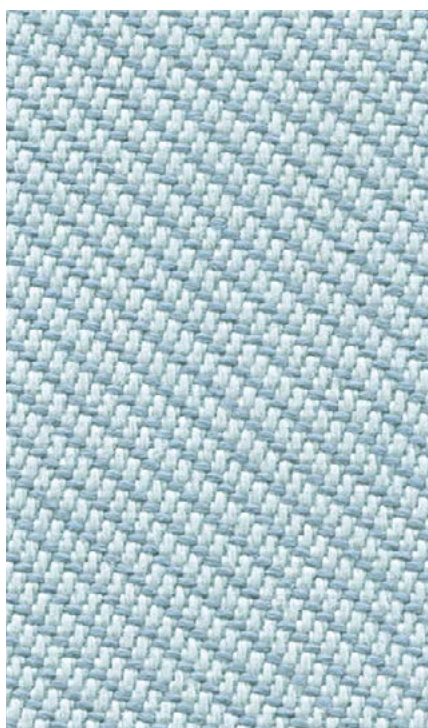
Camira Collection



DAUPHIN
HumanDesign® Group

camira

Oceanic

[Order Samples](#)


Gulf
OOC15



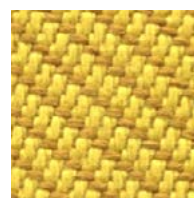
Paddle
OOC13



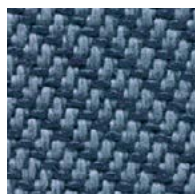
Sea
OOC04



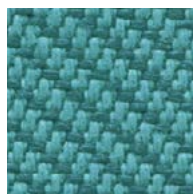
Seafarer
OOC16



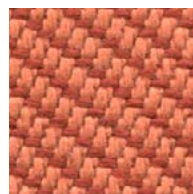
Barrier
OOC07



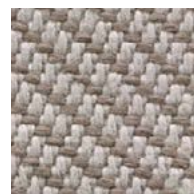
Neptune
OOC11



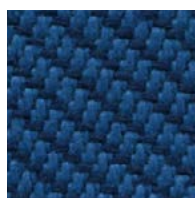
Jetsam
OOC02



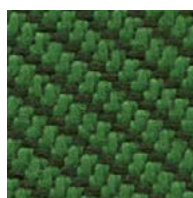
Coral
OOC05



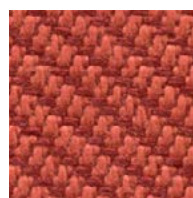
Riptide
OOC14



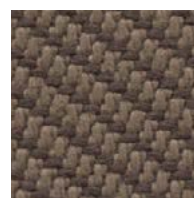
Atoll
OOC06



Coast
OOC03

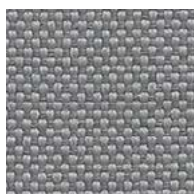


Aquatic
OOC12

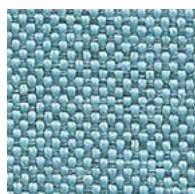


Shore
OOC09

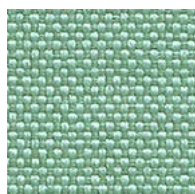
Quest

[Order Samples](#)


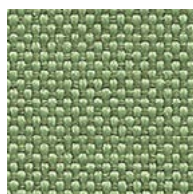
Shell
QUE06



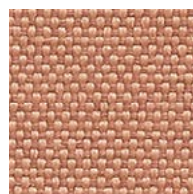
Tide
QUE12



Urchin
QUE17



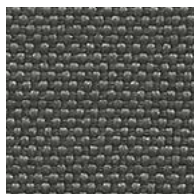
Sea Grass
QUE13



Shrimp
QUE26



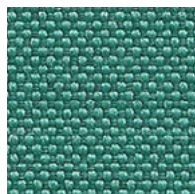
Beach Comber
QUE21



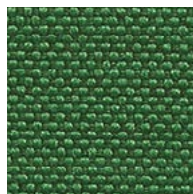
Quartz
QUE05



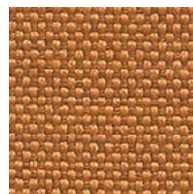
Limpet
QUE09



Sea Foam
QUE16



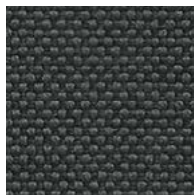
Algae
QUE14



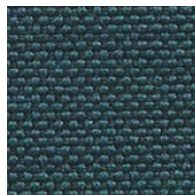
Clay
QUE25



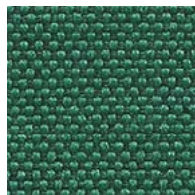
Driftwood
QUE19



Mussel
QUE04



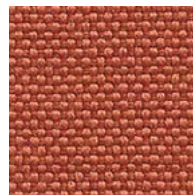
Whelk
QUE08



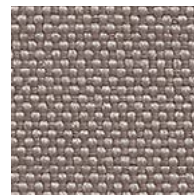
Kelp
QUE15



Abalone
QUE18



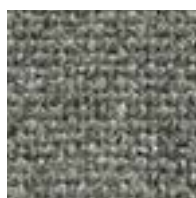
Crab
QUE24



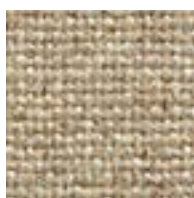
Pebble
QUE27

Visit www.camirafabrics.com to view the full range of colors available in each pattern.
Photographic fabric scans are not color accurate. Always request actual fabric samples before ordering.

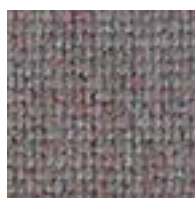
Main Line Flax

[Order Samples](#)


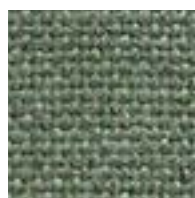
Stratford
MLF64



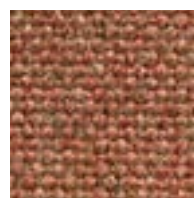
Upminster
MLF20



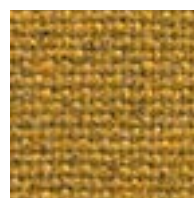
Brixton
MLF47



Greenwich
MLF52



Alpertown
MLF43



Tooting
MLF17



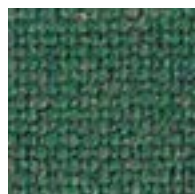
Camden
MLF26



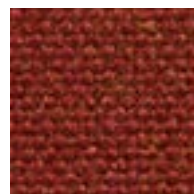
Redbridge
MLF61



Epping
MLF51



Harrow
MLF54



Barking
MLF45



Morden
MLF12



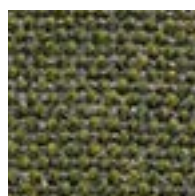
Whitechapel
MLF66



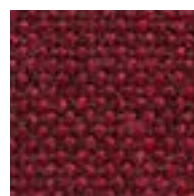
Shadwell
MLF63



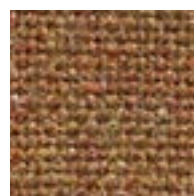
Clapham
MLF49



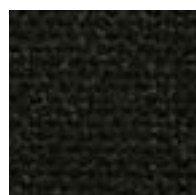
Moorgate
MLF57



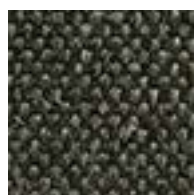
Parsons
MLF14



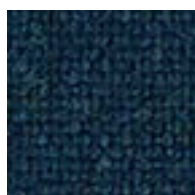
Perivale
MLF59



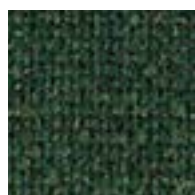
Edgware
MLF28



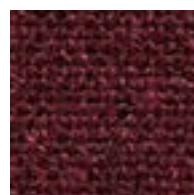
Temple
MLF16



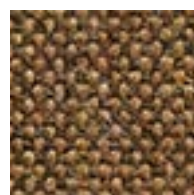
Embankment
MLF50



Hornchurch
MLF55



Blackwall
MLF46



Stockwell
MLF15

Main Line Twist

[Order Samples](#)

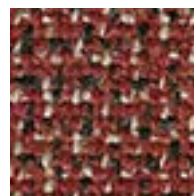

Micron
MLT14



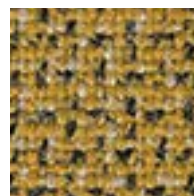
Yarn
MLT04



Blend
MLT11



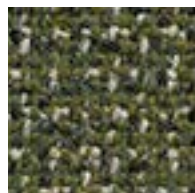
Cone
MLT02



Fold
MLT01



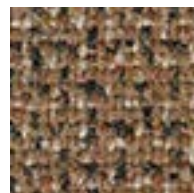
Fibre
MLT05



Creel
MLT09



Crimp
MLT06



Ply
MLT10

Visit www.camirafabrics.com to view the full range of colors available in each pattern.
Photographic fabric scans are not color accurate. Always request actual fabric samples before ordering.

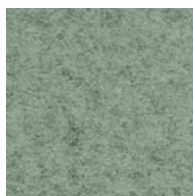
Blazer

[Order Samples](#)


Silverdale
CUZ28



Dartmouth
CUZ2Q



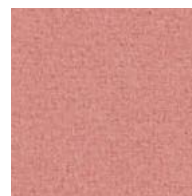
Moray
CUZ4K



Plymouth
CUZ1R



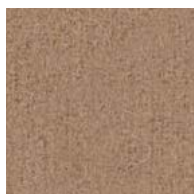
Lucton
CUZ3M



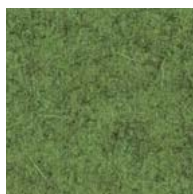
Derby
CUZ4Q



Stoneybridge
CUZ4W



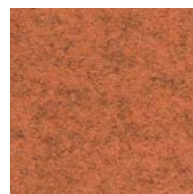
Bristol
CUZ4X



Kingham
CUZ3U



Perth
CUZ4H



Malvern
CUZ3L



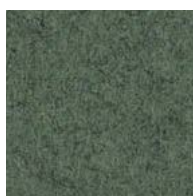
Earlscliffe
CUZ3T



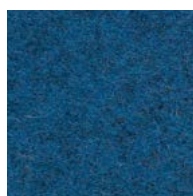
Aberlour
CUZ1J



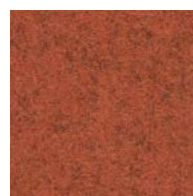
Caterham
CUZ4A



Stowe
CUZ3R



Newcastle
CUZ1W



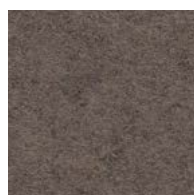
Warwick
CUZ4L



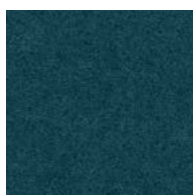
Chichester
CUZ4C



Kingsmead
CUZ67



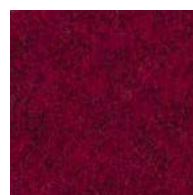
Trevelyan
CUZ31



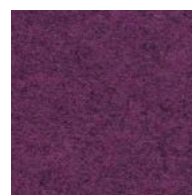
Hull
CUZ1P



Glenalmond
CUZ62



Moreton
CUZ3W



Holyoke
CUZ2T

Sumi

[Order Samples](#)


Tang
SUR01



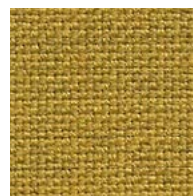
Zen
SUR04



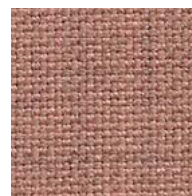
Handa
SUR10



Noda
SUR14



Tamura
SUR22



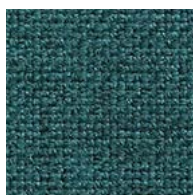
Narita
SUR13



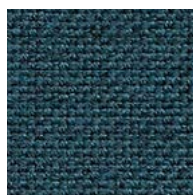
Kobe
SUR03



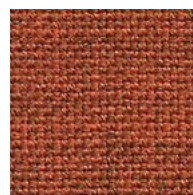
Osaka
SUR06



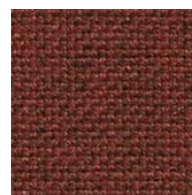
Daisen
SUR09



Uto
SUR25



Tono
SUR23



Mobara
SUR12

Visit www.camirafabrics.com to view the full range of colors available in each pattern.
Photographic fabric scans are not color accurate. Always request actual fabric samples before ordering.

Blazer

Application	Upholstery/Panel
Composition	100% Pure New Wool
Environment	Certified to the EU Ecolabel, Certified to Indoor Advantage Gold, Rapidly renewable and compostable, Environmental Product Declaration - Natural fabric composition, AB 2998 Compliant, Prop 65 Compliant, PFAS Free, Non metallic dyestuffs
Width	54 inches minimum
Weight	13 ^{1/2} oz/sq yd ±5%
Abrasion	Independently certified to ≥75,000 Wyzenbeek double rubs. Covered by a full and comprehensive 10 year guarantee.
Flammability	California Technical Bulletin 117 NFPA 260 + UFAC Class 1 BS 7176 Low Hazard ASTM E84 Class 1 or A (Adhered) ASTM E84 Class 1 or A (Un-adhered) IMO FTP Code (Part 8) Optional, please specify when ordering: NFPA 701 with FR Treatment (Z)

Main Line Twist

Application	Upholstery/Panel
Composition	75% Pure New Wool, 25% Flax
Environment	Certified to the EU Ecolabel, Certified to Indoor Advantage Gold, Rapidly renewable and compostable, Made from wool and plant fiber, AB 2998 Compliant, Prop 65 Compliant, PFAS Free,
Width	54 inches minimum
Weight	13 oz/sq yd ±5%
Abrasion	Independently certified to ≥100,000 Wyzenbeek double rubs. Covered by a full and comprehensive 10 year guarantee.
Flammability	California Technical Bulletin 117 NFPA 260 + UFAC Class 1 BS 7176 Low Hazard ASTM E84 Class 1 or A (Adhered) ASTM E84 Class 2 or B (Un-adhered) IMO FTP Code (Part 8)

Quest

Application	Upholstery/Panel
Composition	100% post-consumer recycled polyester, including 75% SEAQUAL® YARN
Environment	Certified to the EU Ecolabel Certified to STANDARD 100 by OEKO-TEX® Certified to Indoor Advantage Gold Made from 100% post-consumer recycled polyester AB 2998 Compliant, Prop 65 Compliant, PFAS Free Non metallic dyestuffs
Width	54 inches minimum
Weight	9 ^{3/4} oz/sq yd ±5%
Abrasion	Independently certified to ≥100,000 Wyzenbeek double rubs. Covered by a full and comprehensive 10 year guarantee.
Flammability	California Technical Bulletin 117 NFPA 260 + UFAC Class 1 BS 7176 Low Hazard ASTM E84 Class 1 or A (Adhered) ASTM E84 Class 1 or A (Un-adhered) With FR Treatment (Gorts):

Main Line Flax

Application	Upholstery/Panel
Composition	75% Pure New Wool, 25% Flax
Environment	Certified to the EU Ecolabel, Certified to Indoor Advantage Gold, Rapidly renewable and compostable, Made from wool and plant fiber, AB 2998 Compliant, Prop 65 Compliant, PFAS Free,
Width	54 inches minimum
Weight	13 oz/sq yd ±5%
Abrasion	Independently certified to ≥100,000 Wyzenbeek double rubs. Covered by a full and comprehensive 10 year guarantee.
Flammability	California Technical Bulletin 117 NFPA 260 + UFAC Class 1 BS 7176 Low Hazard ASTM E84 Class 1 or A (Adhered) ASTM E84 Class 2 or B (Un-adhered) IMO FTP Code (Part 8)

Oceanic

Application	Upholstery/Panel
Composition	100% post-consumer recycled polyester, including 50% SEAQUAL® YARN
Environment	Certified to the EU Ecolabel Certified to STANDARD 100 by OEKO-TEX® Certified to Indoor Advantage Gold Made from 100% post-consumer recycled polyester AB 2998 Compliant, Prop 65 Compliant, PFAS Free Non metallic dyestuffs
Width	54 inches minimum
Weight	14 ^{3/4} oz/sq yd ±5%
Abrasion	Independently certified to ≥100,000 Wyzenbeek double rubs. Covered by a full and comprehensive 10 year guarantee.
Flammability	California Technical Bulletin 117 BS 7176 Low Hazard ASTM E84 Class 1 or A (Un-adhered) With FR Treatment (Gorts): NFPA 701

Sumi

Application	Upholstery/Panel
Composition	90% Wool, 10% Nylon
Environment	Certified to the EU Ecolabel Certified to Indoor Advantage Gold AB 2998 Compliant Prop 65 Compliant PFAS Free
Width	54 inches minimum
Weight	10 ^{1/4} oz/sq yd ±5%
Abrasion	Independently certified to ≥100,000 Martindale cycles. Covered by a full and comprehensive 10 year guarantee.
Flammability	California Technical Bulletin 117 NFPA 260 + UFAC Class 1 BS 7176 Low Hazard IMO FTP Code (Part 8) Optional, please specify when ordering: ASTM E84 Class 1 or A (Adhered) with FR Treatment (Z) ASTM E84 Class 2 or B (Un-adhered) with FR Treatment (Z) IMO FTP Code (Part 7) with FR Treatment (Z)

camira

www.camirafabrics.com

