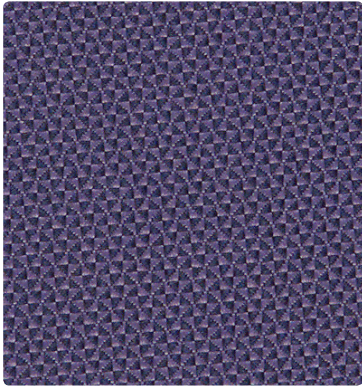
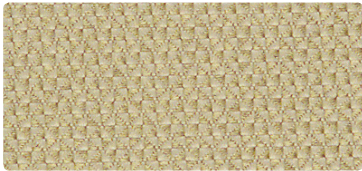


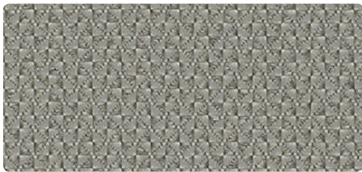
QUATTRO
Grade B



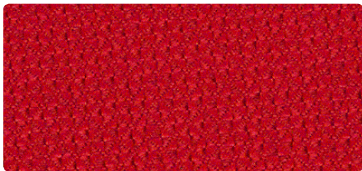
300-004
Midnight Blue



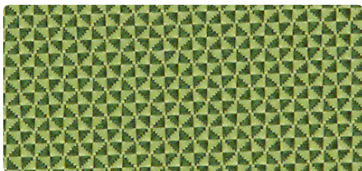
300-007
Chalk



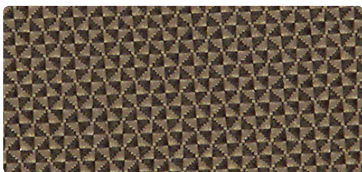
300-026
Mercury



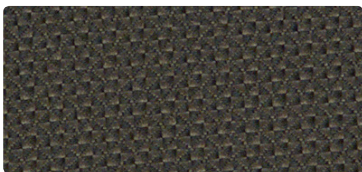
300-011
Hibiscus



300-003
Spring Green

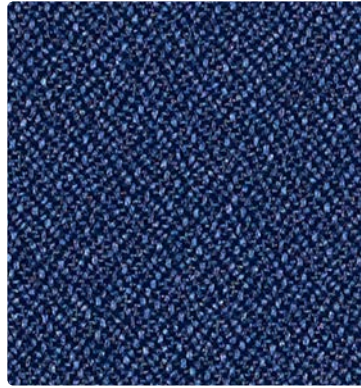


300-016
Khaki



300-006
Granite

FORTE
Grade A



298-004
Cadet



298-017
Pumice



298-026
Flint



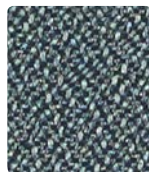
298-001
Rouge



298-053
Grass



298-010
Mocha



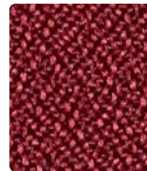
298-016
Slate



298-027
Oatmeal



298-036
Char



298-011
Port



298-043
Hedge

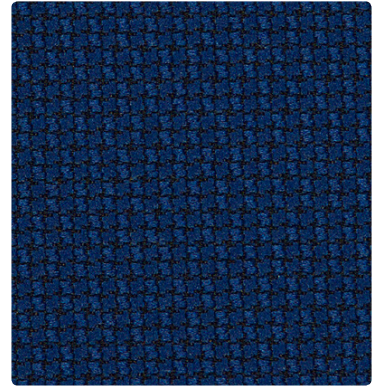


298-000
Fudge



298-006
Tuxedo

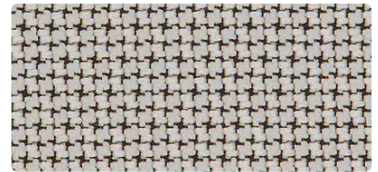
CROSS CHECK
Grade B



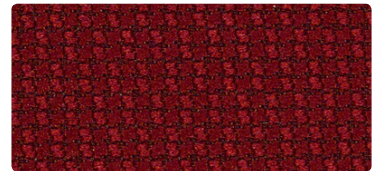
299-054
Marine



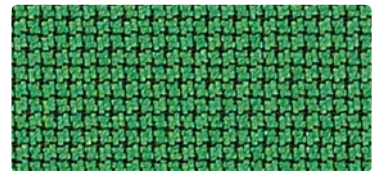
299-037
Biscuit



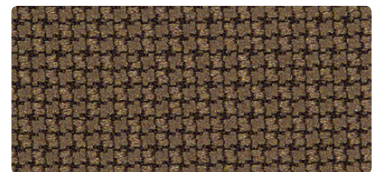
299-036
Dove



299-011
Vermillion



299-043
Bottle



299-000
Otter



299-006
Slate Black

TECHNICAL INFORMATION

Grade A&B Coordinates

Pattern 54"	Content and Backing	Certifications	Weight/ Linear Yd.	Pattern Repeat	Finish	Abrasion Wyzenbeek	Light-Fastness	Flammability	Cleaning Code	Grade
CROSS CHECK <i>Multi-purpose*</i>	100% Polyester Backing: Acrylic	GREENGUARD Gold	10.71 oz.	Non-Matching	Stain Repellent	258,000 [^] Double Rubs	40 hours	Cal. 117-2013 NFPA 260/UFAC Class 1 ASTM E84 (Adhered) Class 2 or B	S	B
FORTE <i>Multi-purpose*</i>	100% Polyester Backing: Acrylic	GREENGUARD Gold	12.10 oz.	None	Stain Repellent	183,000 [^] Double Rubs	40 hours	Cal. 117-2013 NFPA 260/UFAC Class 1 ASTM E84 (Adhered) Class 2 or B	WS	A
QUATTRO <i>Directional Multi-purpose*</i>	100% Polyester Backing: Acrylic	GREENGUARD Gold	13.06 oz.	Non-Matching	Stain Repellent	237,000 [^] Double Rubs	40 hours	Cal. 117-2013 NFPA 260/UFAC Class 1 ASTM E84 (Unadhered) Class 1 or A IMO A.652(16) 8.2	S	B

REDUCED ENVIRONMENTAL IMPACT

These products are GREENGUARD Gold Certified for low chemical and particle emissions to UL standard UL 2818 and may contribute to LEED certification. For complete information visit mayerfabrics.com and UL.com/gg.

CARE AND CLEANING INFORMATION

S: Solvent

WS: Water/Solvent Cleaner

For additional care and cleaning information by pattern, please refer to the Mayer Fabrics website.

ADDITIONAL INFORMATION

CAL TB 133: All patterns may comply with California Technical Bulletin 133 when combined with appropriate components.

^Abrasion: Multiple factors affect fabric durability and appearance retention, including end-user application and proper maintenance. Wyzenbeek results above 100,000 double rubs have not been shown to be a reliable indicator of increased fabric lifespan.

Custom Capabilities: All patterns can be custom colored. Minimum yardage applies.

Digital Swatch Card Color Matching: Due to color variations on different monitors and color printers, actual swatch colors may vary slightly. Please request a memo sample from Mayer Fabrics to ensure proper color representation.

Specifications: Specifications are correct at the time of printing. Additional specifications are available on the Mayer Fabrics website.

***Cross Check, Forte, Quattro:** A multi-purpose fabric that can be used for upholstery, panels, & wrapped walls.



These fabrics meet or exceed these ACT performance guidelines.
Certification Marks owned by ACT



Water and Stain Repellent Finish



This 100% polyester fabric is included in the Underwriter's Laboratory Fabric Recognition Program. Additional testing of this U.L. recognized component is not required on approved panels from participating manufacturers.

TexTile3D™

by Mayer Fabrics

For additional colors, pre-approved patterns, grade-ins, samples and specifications, please refer to the Mayer TexTile3D link.

DAUPHIN



MAYERFABRICS

T 800.631.1186 F 800.220.3844
www.dauphin.com inquire@dauphin.com
100 Fulton Street, Boonton NJ 07005

T 317.267.2626 or 800.428.4415 F 317.267.2629 or 877.7SAMPLE
www.mayerfabrics.com
©2018 Mayer-Paetz, Inc.

DGABCCD
50818