



Join Me



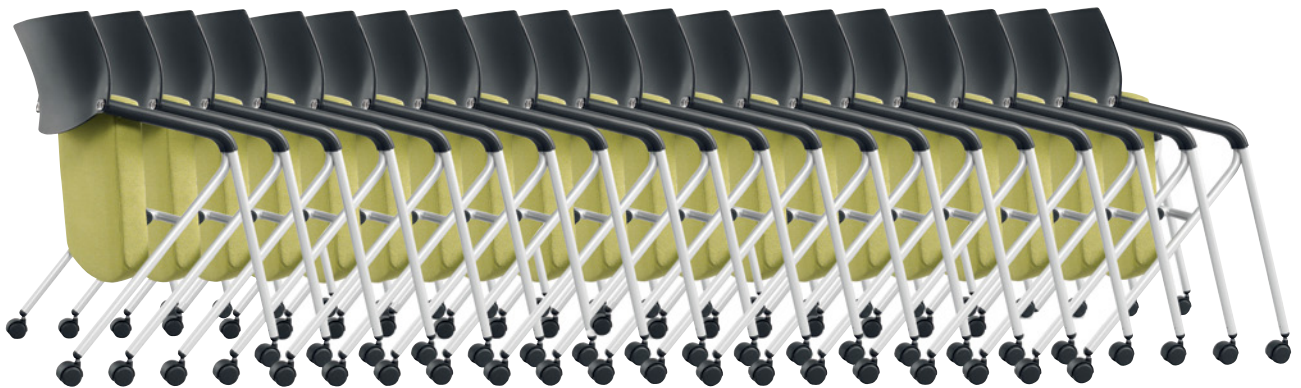
JM12250-400UBR



JM12250-400

Join Me blends the stability and comfort of a traditional four-legged conference chair with the convenience and flexibility of a folding chair. The molded backrest is available in black and the large backrest is available either fully upholstered or in a multitude of mesh colors. This exciting nesting chair is generously proportioned with a large backrest and seat, and features slanted arms to fit comfortably at tables. The frame is standard in durable silver powder coated finish and is available in polished metal on request.

DESIGN: Martin Ballendat



JM12240-400
Nesting



Join Me

Raised Back

JM12240-400 Shown For Reference



Seat: 18"W x 19"D x 18"H
Back: 23.5" x 17"H
Overall: 23.5"W x 23"D x 34"H
Arm Height: 24"H at Front of Arm and 26"H at Rear
Nesting With Seat in Up Position: 23"D, For Each Additional Chair Add 7"

JM12240-400

Raised Poly Back

JM12240-400UBR

Raised Fully Upholstered Back

Large Back

JM12250-400 Shown For Reference



Seat: 18"W x 19"D x 18"H
Back: 18"W x 17"H
Overall: 23.5"W x 25"D x 35"H
Arm Height: 24"H at Front of Arm and 26"H at Rear
Nesting With Seat in Up Position: 23"D, For Each Additional Chair Add 8"

JM12250-400

Mesh Large Back

JM12250-400UBR

Upholstered Large Back

Standard

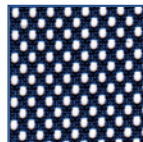
Description

Seat	Flip Up for Nesting
Poly Back	Durable Molded Black Poly
Slanted Arm	Avoids Interference with the Work Surface
Arm Pads	Durable Poly Construction
Frame	Silver Powdercoat
Carpet Casters	Hard Wheel Free Rolling Casters for Soft Surface

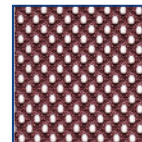
Options

Description

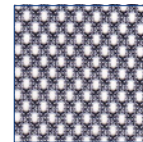
Polished Metal Frame	Special Order. Check Lead Time
Hard Floor Casters	Soft Wheel Braking Casters for Hard Floor
Cal 133 Fire Code	Fire Barrier Applied Under the Upholstery
Back Mesh Colors	See Attimo Mesh Colors Below



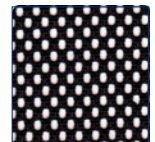
4102 Midnight Blue



4112 Latte



4104 Silver Gray



4101 Black