

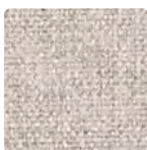
DAUPHIN

GRADE C DESIGN COORDINATES

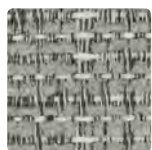




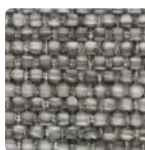
TANGO
460-002 Sunrise



FEDORA
621-046 Light Grey



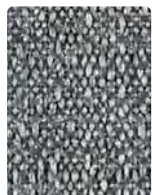
SYDNEY
456-016 Silver



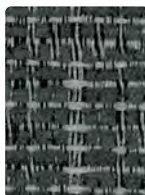
HAVANA
459-026 Metal



FEDORA
621-036 Dapper



CONTINUUM10
422-016 Charcoal



SYDNEY
456-006 Iron



TANGO
460-001 Sangria



SYDNEY
456-001 Crimson



JIVE
461-001 Bordeaux



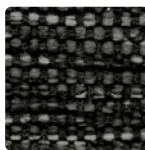
FEDORA
621-001 Ruby



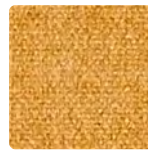
FEDORA
621-006 Bitumen



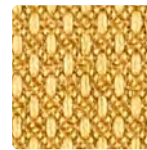
HAVANA
459-006 Onyx



HAVANA
459-016 Storm



FEDORA
621-002 Topaz



VARIANT10
425-002 Mustard



HAVANA
459-002 Saffron



FEDORA
621-017 Fawn



VARIANT10
425-010 Cocoa



SYDNEY
456-017 Butterscotch



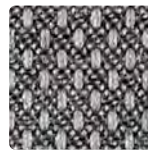
TANGO
460-006 Flint



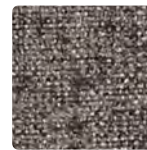
FEDORA
621-000 Mink



HAVANA
459-000 Chocolate



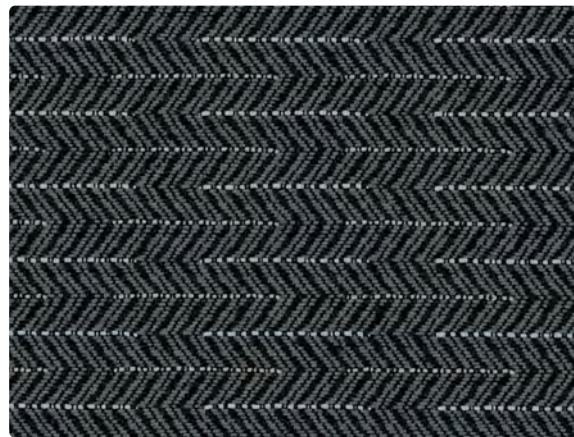
VARIANT10
425-006 Carbon



FEDORA
621-016 Charcoal



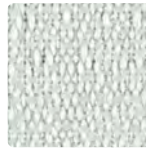
FIJI
458-016 Charcoal



JIVE
461-006 Smoke



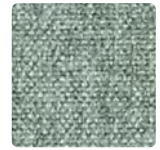
FEDORA
621-014 Indigo



CONTINUUM10
422-026 Dove



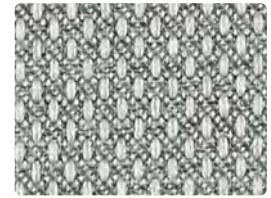
HAVANA
459-024 Sky



FEDORA
621-033 Opal



TANGO
460-004 Skyline



VARIANT10
425-016 Flint



FEDORA
621-043 Aquamarine



CONTINUUM10
422-044 Ocean



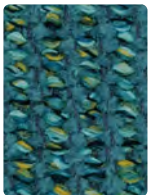
VARIANT10
425-014 Prussian



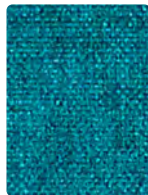
HAVANA
459-014 Peacock



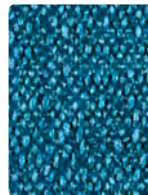
TANGO
460-013 Limeade



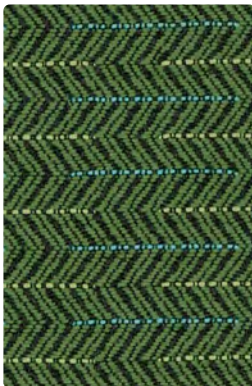
FIJI
458-014 Grotto



FEDORA
621-053 Aegean



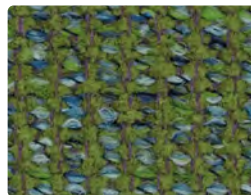
CONTINUUM10
422-024 Caribbean



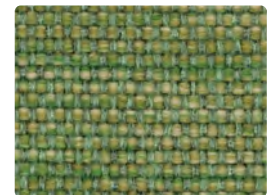
JIVE
461-003 Emerald



TANGO
460-014 Harbor



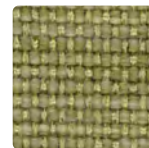
FIJI
458-013 Evergreen



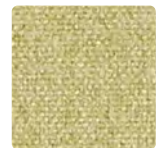
HAVANA
459-003 Meadow



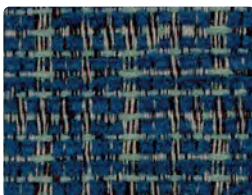
SYDNEY
456-013 Citrus



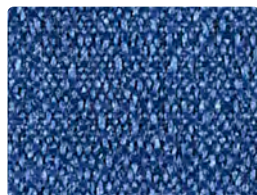
HAVANA
459-013 Spring



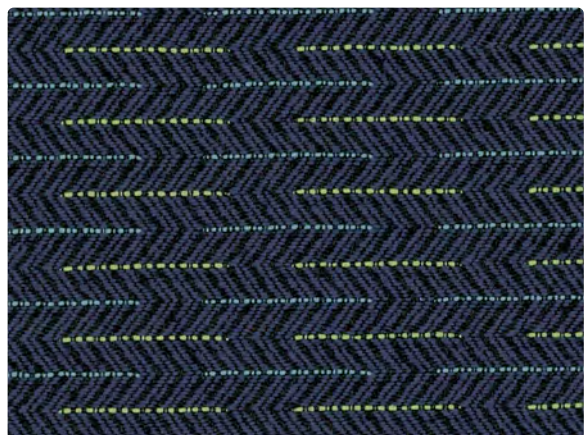
FEDORA
621-023 Eucalyptus



SYDNEY
456-004 Ocean



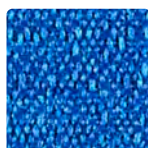
CONTINUUM10
422-004 Indigo



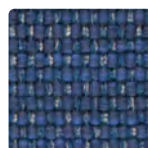
JIVE
461-004 Midnight



VARIANT10
425-004 Ink



CONTINUUM10
422-014 Electric



HAVANA
459-004 Indigo

Additional colors are available. Please refer to the Mayer website.

TECHNICAL INFORMATION

Dauphin Grade C Design Coordinates

Pattern 54"	Content and Backing	Certifications	Weight/ Linear Yd.	Pattern Repeat	Finish	Abrasion Wyzenbeek	Light-Fastness	Flammability	Cleaning Code
CONTINUUM10 <i>Directional Multi-use*</i>	100% Post-Consumer Recycled Polyester Backing: Latex	GREENGUARD Gold	15 oz.	0.50" H, 0.59" V	Stain Repellent – PFOA & PFOS Free	130,000 ^A Double Rubs	40 hours	Cal. 117-2013 NFPA 260/UFAC Class 1 ASTM E84 (Unadhered) Class 1 or A	WS
FEDORA <i>Directional Multi-use*</i>	100% Polyester Backing: Polyester	GREENGUARD Gold	17.2 oz.	None	Stain Repellent – PFOA Free	100,000 Double Rubs	40 hours	Cal. 117-2013 NFPA 260/UFAC Class 1 ASTM E84 (Unadhered) Class 1 or A	W
FIJI <i>Directional</i>	61% Polyester, 39% Olefin Backing: Acrylic	GREENGUARD Gold	17.184 oz.	0.906" H, 0.406" V Non-Matching	Nano-Stain Repellent – PFOA & PFOS Free	60,000 Double Rubs	40 hours	Cal. 117-2013 NFPA 260/UFAC Class 1	WS, BC
HAVANA <i>Directional</i>	70% Polypropylene, 30% Polyester Backing: Latex	GREENGUARD Gold	16.04 oz.	None	Inherently Cleanable (refer to mayerfabrics.com/vivalife)	100,000 Double Rubs	40 hours	Cal. 117-2013 NFPA 260/UFAC Class 1	W, BC, IC
JIVE <i>Directional</i>	100% Polyester Backing: Acrylic	GREENGUARD Gold	12.43 oz.	1.2" H, 0.4" V	Stain Repellent – PFOA & PFOS Free	82,000 Double Rubs	40 hours	Cal. 117-2013 NFPA 260/UFAC Class 1	S
SYDNEY <i>Directional</i>	52% Recycled Polyester (34% Pre-/18% Post-Consumer), 48% Polyester Backing: Acrylic	GREENGUARD Gold	13.44 oz.	0.938" H, 0.842" V Non-Matching	Nano-Stain Repellent – PFOA & PFOS Free	63,000 Double Rubs	40 hours	Cal. 117-2013 NFPA 260/UFAC Class 1	WS, BC
TANGO <i>Directional</i>	100% Polyester Backing: Acrylic	GREENGUARD Gold	17.27 oz.	4.8" H, 4.8" V	Stain Repellent – PFOA & PFOS Free	80,000 Double Rubs	40 hours	Cal. 117-2013 NFPA 260/UFAC Class 1	S
VARIANT10 <i>Directional Multi-use*</i>	75% Post-Consumer Recycled Polyester 25% Polyester Backing: Latex	GREENGUARD Gold	14.5 oz.	0.17" H, 0.20" V	Stain Repellent – PFOA & PFOS Free	140,000 ^A Double Rubs	40 hours	Cal. 117-2013 NFPA 260/UFAC Class 1 ASTM E84 (Unadhered) Class 1 or A	WS

REDUCED ENVIRONMENTAL IMPACT

These products are GREENGUARD Gold Certified for low chemical and particle emissions to UL standard UL 2818 and may contribute to LEED certification. For complete information visit mayerfabrics.com and UL.com/gg.

Continuum10

FR Free Antimicrobial/Antibacterial Free



Eco-System®
Sustainable. Attainable at Mayer Fabrics.

The Eco-System icon indicates 100% recycled content.

Fedora
FR Free

Havana
OEKO-TEX® Certified

Variant10
FR Free Antimicrobial/Antibacterial Free

TEN YEAR WARRANTY – Continuum10, Variant10

Continuum10 and Variant10 are covered by a 10-year limited performance warranty from the date of installation, when used for seating applications. Continuum10 and Variant10 are warranted against wear through (i.e. the complete deterioration of the fabric's structure in a particular area) if properly installed and maintained. This warranty does not cover damage due to abuse, misuse, vandalism, inadequate padding or abrasion from other seating components or furniture, use of improper cleaning agents or methods and use subsequent to ownership by the original purchaser. Mayer Fabrics can provide a copy of the warranty.

If Continuum10 and Variant10 fail to perform during the 10-year warranty period, the affected area of fabric will be repaired or replaced including labor and materials upon written request of the customer.

Except as expressly provided herein, Mayer Fabrics makes no representations or warranties, express or implied, including, without limitation, any warranty of merchantability or fitness of its products for any particular purpose, and hereby disclaim the same.

CARE AND CLEANING INFORMATION

W: Water-Based Cleaner WS: Water/Solvent Cleaner S: Solvent Cleaner IC: Inherently Cleanable (refer to mayerfabrics.com/vivalife)

BC: Bleach Cleanable – 1 part bleach, 9 parts water = 10% bleach, 90% water solution. Do not clean/disinfect fabric for longer than 10 minutes using the 10% bleach solution. Always rinse promptly with clean water after applying the bleach solution. Failure to do so will void any and all warranties.

DYE TRANSFER DISCLAIMER

Certain clothing and accessory dyes (such as those used on denim jeans) may migrate to lighter colors. This phenomenon is increased by humidity and temperature and is irreversible. Mayer Fabrics will not assume responsibility for dye transfer caused by external contaminants. Please check compatibility when using this product in combination with painted or varnished surfaces.

ADDITIONAL INFORMATION

^A**Abrasion:** Multiple factors affect fabric durability and appearance retention, including end-user application and proper maintenance. Wyzenbeek results above 100,000 double rubs have not been shown to be a reliable indicator of increased fabric lifespan.

^{*}**Multi-Use:** Multi-use fabrics that can be used for upholstery, panels, wrapped walls, and acoustic.

Custom Capabilities: All patterns can be custom colored. Minimum yardage applies.

Digital Swatch Card Color Matching: Due to color variations on different monitors and color printers, actual swatch colors may vary slightly. Please request a memo sample from Mayer Fabrics to ensure proper color representation.

Specifications: Specifications are correct at the time of printing. Additional specifications are available on our website.



These fabrics meet or exceed these ACT performance guidelines. *Certification Marks owned by ACT*

Continuum10, Fedora, Jive, Tango, Variant10



Continuum10, Fedora, Variant10



This 100% polyester fabric is included in the Underwriter's Laboratory Fabric Recognition Program. Additional testing of this U.L. recognized component is not required on approved panels from participating manufacturers.

DAUPHIN

TexTile3D™

by Mayer Fabrics

For additional colors, pre-approved patterns, grade-ins, samples and specifications, please refer to the Mayer TexTile3D link.



MAYERFABRICS