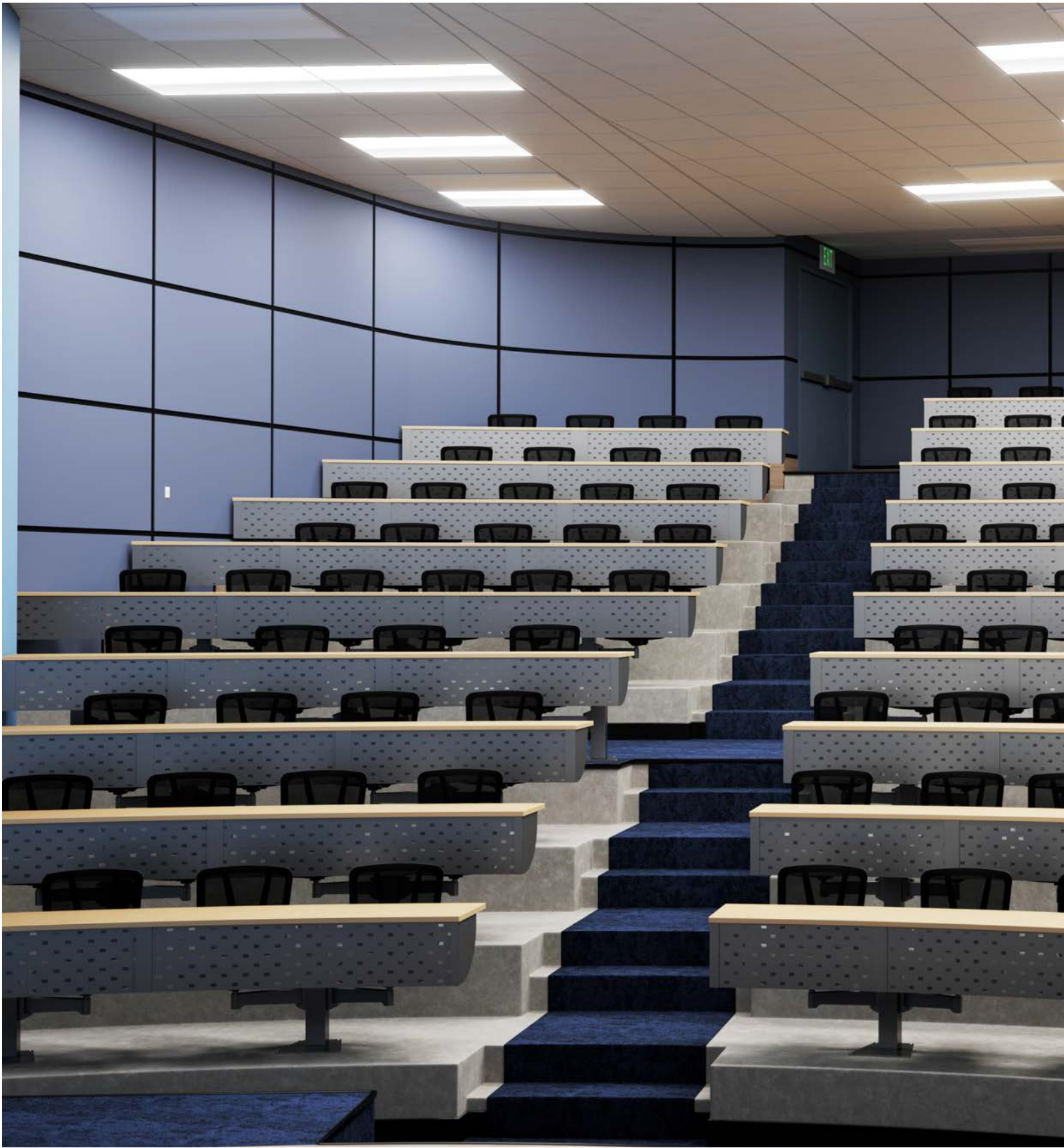


Rota



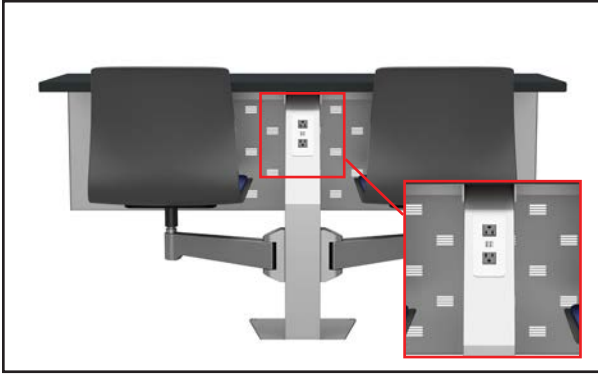


Rota Fixed Seating | Flexible Solutions



Rota is a fixed table with swing away seat system that provides a wide range of options to meet flat, sloped and tiered installations in straight or curved applications. This system provides an integrated solution that promotes collaborative learning with an attractive and comfortable range of Dauphin chairs and frame finishes to complement any environment.

Rota



Power Access

Center support column permits convenient access to USB and duplex power outlets without loss of valuable work surface space. Conventional surface mounted and under surface power systems also available.



Slim Column

Rota Slim allow for a smaller footprint that increases the number of seats in an environment.



Leg Option

Although optional Gamba legs are not required to support worksurfaces for end of run positions, they can provide an alternative entry point for power.

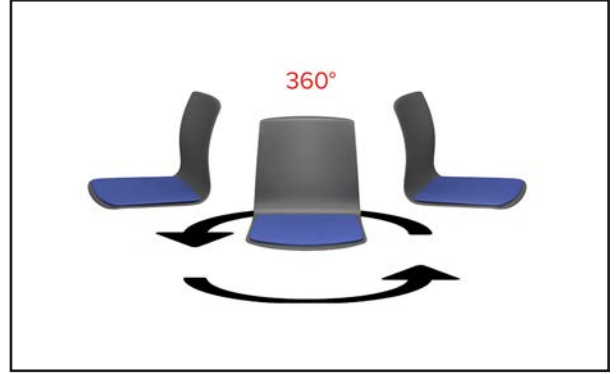
Center Column

Center support eliminates the need for additional support legs, providing more leg room and easy accessibility to clean the floor and surrounding areas.



Pivoting Arms

To easily enter and exit the seat, users can move the pivoting arms. The high-tension internal spring returns the chair to its original position after the seat is exited.



Automatic Return System

Seats rotate 360 degrees allowing users to collaborate with users behind them. The automatic return system ensures all seats are facing forward when not in use.



Top adjustment

Rota is built with adjustable pitch and angle devices to level worksurfaces on uneven floors without shims.

Base

An attractive 5/16" Steel base and finished column eliminate the need for plastic foot and trim covers and provide maximum support.

Rota





Choose from the following Dauphin seats



Siamo



Vida



Eddy



Eddy



Cempa (All Poly)



Cempa (Wood Shell)



Cempa (Poly Shell with Upholstered Seat Pad)



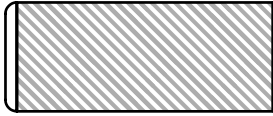
Cempa (Fully Upholstered)

Create tiered seating on a flat floor with multiple height columns and footrests.

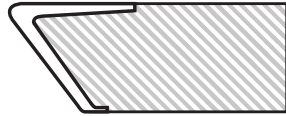
Table Surfaces

Choose from any Formica or Wilsonart Laminate Finish

Edge Profiles



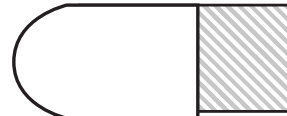
3mm PVC Edge



Urethane Knife Edge



Urethane Waterfall Edge
(also available in wood)



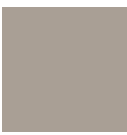
Urethane Bullnose Edge
(also available in wood)

Custom finishes to match and other wood edges available upon request.

Urethane Edge Colors



Gray



Beige



Deep Gray



Sage



Brown



Black



Deep Red



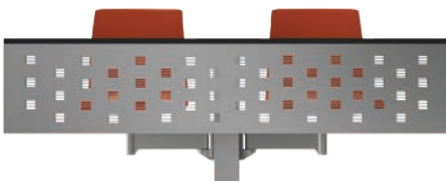
Dark Coffee



Deep Blue

Modesty Panels

Metal



Perforated (Slots)



Solid



Perforated (Circles)

Laminate



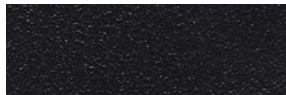
Wood



Frame Colors



Silver



Black



White



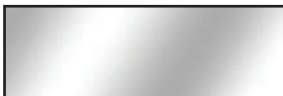
Dark Metallic Gray



Sand



Dark Bronze Metallic



Chrome available for
Arm & Base Plate