

## Technical information

### EN

#### Composition

Synergy: 95% Pure New Wool, 5% Nylon  
Patina: 69% Wool, 22% Flax, 8% Nylon, 1% Viscose  
Main Line Flax: 70% Pure New Wool, 30% Flax

#### Environmental

Synergy/Patina/Main Line Flax: Certified to the EU Ecolabel  
Main Line Flax: Rapidly renewable and compostable

#### Width

Synergy/Patina/Main Line Flax: 54 inches minimum

#### Weight

Synergy: 11<sup>3/4</sup> oz/sq yd ±5% (17<sup>3/4</sup> oz/running yd ±5%)  
Patina: 9<sup>3/4</sup> oz/sq yd ±5% (14<sup>1/2</sup> oz/running yd ±5%)  
Main Line Flax: 12<sup>3/4</sup>oz/sq yd ±5% (19<sup>1/4</sup> oz/running yd ±5%)

#### \*Abrasion Resistance

Synergy: ASTM D4157 Wyzenbeek method.  
Heavy Duty Upholstery 50,000 double rubs  
Patina: ASTM D4966 Martindale method.  
Heavy Duty Upholstery independently certified to ≥100,000 cycles.  
Main Line Flax: ASTM D4157 Wyzenbeek method  
Heavy Duty Upholstery 90,000 double rubs  
Covered by a full and comprehensive 10 year guarantee (full details available)

#### Flammability

Synergy/Patina/Main Line Flax:  
California Technical Bulletin 117 - 2013  
NFPA 260 + UFAC - Class 1  
BS 7176 Low Hazard  
Patina:  
ASTM E84 Class 1 or A (Adhered)  
ASTM E84 Class 2 or B (Un-adhered)  
*Note: Flammability performance is dependent on foam used.*

#### Colorfastness to light

Synergy/Patina/Main Line Flax: AATCC-16 (40 hours)  
Class 4

#### Colorfastness to crocking

Synergy/Patina/Main Line Flax: AATCC-8 (Dry: 4, Wet: 3)

#### Cleaning code

Synergy/Patina/Main Line Flax: W/S  
Water-based cleaning agent or solvent: Depending on the stain, you can use a dry-cleaning solvent, the foam of a mild detergent, or upholstery shampoo.

\*Camira recognizes that the number of Martindale cycles/ Wyzenbeek double rubs do not reflect the actual wear performance of fabrics. We're so confident in the durability of our products that we provide a robust 10 year guarantee (full details available). This product is externally certified, details of which are on our website and available from our customer services team.

Multiple factors affect fabric durability and appearance retention, including end-user application and correct maintenance. Results above 100,000 cycles/double rubs have not been shown to be a reliable indicator of increased fabric lifespan.

Batch to batch variations in shade may occur within commercial tolerances. We reserve the right to alter technical specifications without notice. The Unregistered Design Rights and the Copyright in all designs are the exclusive property of Camira Fabrics Limited.

Dauphin  
100 Fulton Street  
Boonton, NJ 07005  
TEL: 800.631.1186  
FAX: 800.220.3844  
EMAIL: info@dauphin.com  
D.CWC.0817 © Dauphin Furniture  
**www.dauphin.com**

For additional information or sample requests visit:  
**www.camirafabrics.com**  
Samples can also be requested by email at:  
**memos@camirafabrics.com**

### F

#### Composition

Synergy: 95% Pure Laine Vierge, 5% Nylon  
Patina: 69% Laine, 22% Lin, 8% Nylon, 1% Viscose  
Main Line Flax: 70% Pure Laine Vierge, 30% Lin

#### Écologique

Synergy/Patina/Main Line Flax: Avec le certificat EU Ecolabel  
Main Line Flax: Rapidement renouvelable et compostable

#### Largeur

Synergy/Patina/Main Line Flax: 54 pouces minimum

#### Poids

Synergy: 11<sup>3/4</sup> oz/sq yd ±5% (17<sup>3/4</sup> oz/running yd ±5%)  
Patina: 9<sup>3/4</sup> oz/sq yd ±5% (14<sup>1/2</sup> oz/lin. yd ±5%)  
Main Line Flax: 12<sup>3/4</sup>oz/sq yd ±5% (19<sup>1/4</sup> oz/lin. yd ±5%)

#### \*Résistance à l'abrasion

Synergy: ASTM D4157 Wyzenbeek method.  
Heavy Duty Upholstery 50,000 double rubs  
Patina: ASTM D4966 Martindale method.  
Usage intense certificat indépendant ≥100,000 cycles.  
Main Line Flax: ASTM D4157 Wyzenbeek method  
Heavy Duty Upholstery 90,000 double rubs  
Avec une garantie totale de durabilité de 10 ans (renseignements complémentaires disponibles)

#### Flammabilité

Synergy/Patina/Main Line Flax:  
California Technical Bulletin 117 - 2013  
NFPA 260 + UFAC - Class 1  
BS 7176 Low Hazard  
Patina:  
ASTM E84 Class 1 or A (Adhered)  
ASTM E84 Class 2 or B (Un-adhered)  
*Notez: Réaction au feu dépend de la mousse utilisée.*

#### Solidité à la lumière

Synergy/Patina/Main Line Flax: AATCC-16 (40 heures)  
Class 4

#### Crocking

Synergy/Patina/Main Line Flax: AATCC-8 (Sec: 4, Mouillé: 3)

#### Nettoyage

Synergy/Patina/Main Line Flax: W/S  
Nettoyer avec un produit d'entretien à base d'eau: en fonction de la tâche, vous pouvez nettoyer à sec, à l'aide d'un détergent ou bien avec du shampoing pour meubles.

\*Camira reconnait que le nombre de Martindale cycles/Wyzenbeek double rubs ne reflète pas la performance de l'usure réelle des tissus. Nous sommes tellement confiants dans la pérennité de nos produits que nous offrons une garantie solide de 10 ans (plus de détails disponibles). Cette gamme est certifiée externe, vous pouvez d'ailleurs trouver plus de détails sur notre site internet ou en contactant un membre de notre Service Clients.

La durabilité d'un tissu et sa capacité à conserver son aspect sont affectées par divers facteurs, y compris son environnement d'installation et son entretien. Un résultat de 100 000 ou plus (Martindale cycles/Wyzenbeek double rubs) n'est pas un indicateur fiable quant à la longévité d'un tissu.

Une variation de couleurs peut provenir (commercialement tolérable). Nous réservons le droit de changer les spécifications techniques sans préavis. Les Droits de Conception non-enregistrés et les droits d'auteur de tous les motifs sont la propriété exclusives de Camira Fabrics Limited.



### ES

#### Composición

Synergy: 95% Pura Lana Virgen, 5% Nylon  
Patina: 69% Lana, 22% Lino, 8% Nylon, 1% Viscosa  
Main Line Flax: 70% Pura Lana Virgen, 30% Lino

#### Ambiental

Synergy/Patina/Main Line Flax: Certificado con EU Ecolabel  
Main Line Flax: Rapidamente renovable y compostable

#### Ancho

Synergy/Patina/Main Line Flax: 54 pulgadas mínimo

#### Peso

Synergy: 11<sup>3/4</sup> oz/sq yd ±5% (17<sup>3/4</sup> oz/running yd ±5%)  
Patina: 9<sup>3/4</sup> oz/sq yd ±5% (14<sup>1/2</sup> oz/yd ±5%)  
Main Line Flax: 12<sup>3/4</sup>oz/sq yd ±5% (19<sup>1/4</sup> oz/yd ±5%)

#### \*Resistencia a la abrasión

Synergy: ASTM D4157 Wyzenbeek method.  
Heavy Duty Upholstery 50,000 double rubs  
Patina: ASTM D4966 Martindale method.  
Uso intenso, certificado independientemente a ≥100,000 ciclos.  
Main Line Flax: ASTM D4157 Wyzenbeek method  
Heavy Duty Upholstery 90,000 double rubs  
Con garantía de uso 10 años (más información disponible bajo consulta)

#### Inflamabilidad

Synergy/Patina/Main Line Flax:  
California Technical Bulletin 117 - 2013  
NFPA 260 + UFAC - Class 1  
BS 7176 Low Hazard  
Patina:  
ASTM E84 Class 1 or A (Adhered)  
ASTM E84 Class 2 or B (Un-adhered)  
*Condiciones ignifugas dependientes del tipo de foam utilizado.*

#### Solidez a la luz

Synergy/Patina/Main Line Flax: AATCC-16 (40 horas)  
Class 4

#### Solidez al rozamiento

Synergy/Patina/Main Line Flax: AATCC-8 (Seco: 4, Húmedo:3)

#### Limpieza

Synergy/Patina/Main Line Flax: W/S  
Lavar con un producto de limpieza neutro o solvente: en función de la suciedad o mancha, se puede limpiar con un producto de limpieza en seco, espuma templada o producto de limpieza de sofás.

\*Camira reconoce que el número de Martindale cycles/Wyzenbeek double rubs no refleja el rendimiento real del desgaste de los tejidos. Estamos tan seguros de la durabilidad de nuestros tejidos que ofrecemos una garantía íntegra de 10 años (los detalles completos están disponibles). Esta gama está certificada externamente, todos los detalles están disponibles en nuestra web y en el departamento de atención al cliente.

Muchos factores afectan la durabilidad y aspecto del tejido, incluyendo al usuario final y mantenimiento apropiado. Por encima de 100.000 ciclos/double rubs, no se ha demostrado doble frotamiento que indiquen una durabilidad mayor del tejido.

**Nota:** las variaciones de lote a lote en la sombra se puede producir dentro de tolerancias comerciales. Nos reservamos el derecho a efectuar modificaciones técnicas sin previo aviso. Los derechos sobre los diseños no registrados y los derechos de autor en todos los diseños son propiedad exclusiva de Camira Fabrics Limited.

# Wool Selections

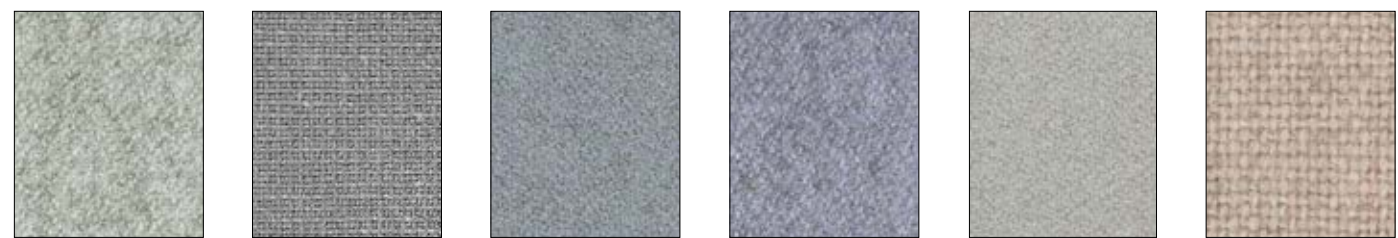
## Main Line Flax / Patina / Synergy

DAUPHIN  
camira

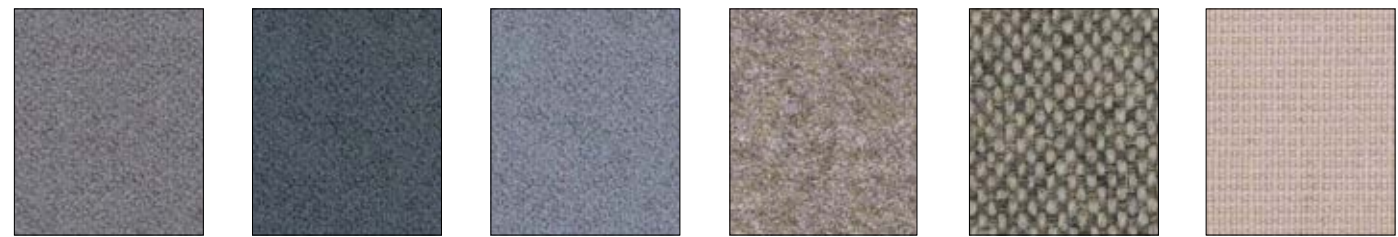


**Wool Selections**

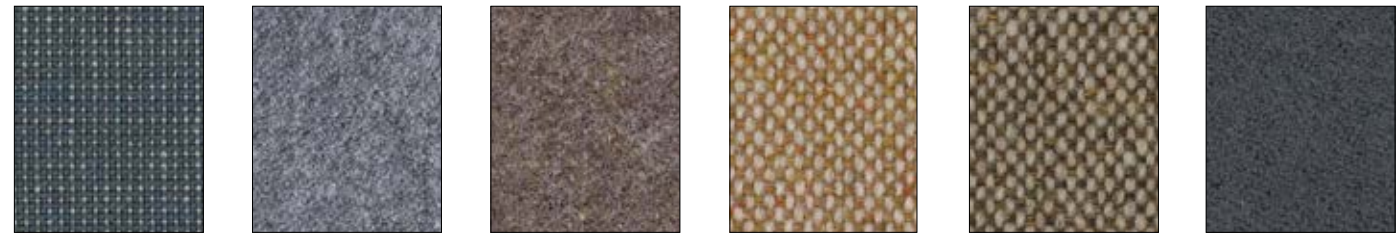
www.camirafabrics.com



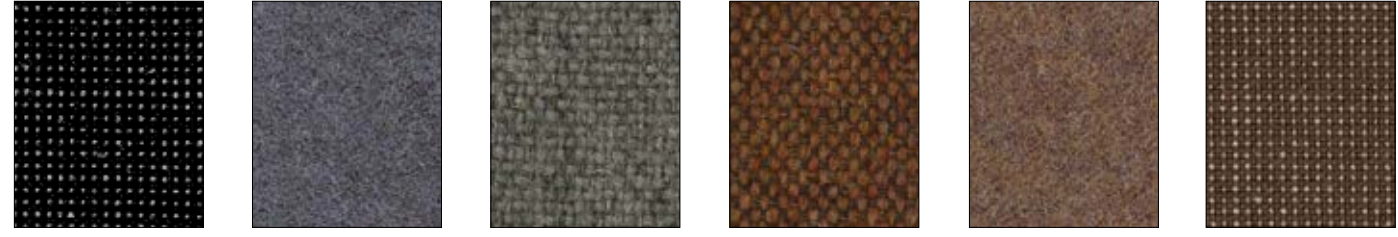
**Synergy** Serendipity LDS08   **Patina** Layered PAT12   **Synergy** Level LDS20   **Synergy** Venture LDS05   **Synergy** Chain LDS19   **Main Line Flax** Upminster MLF20



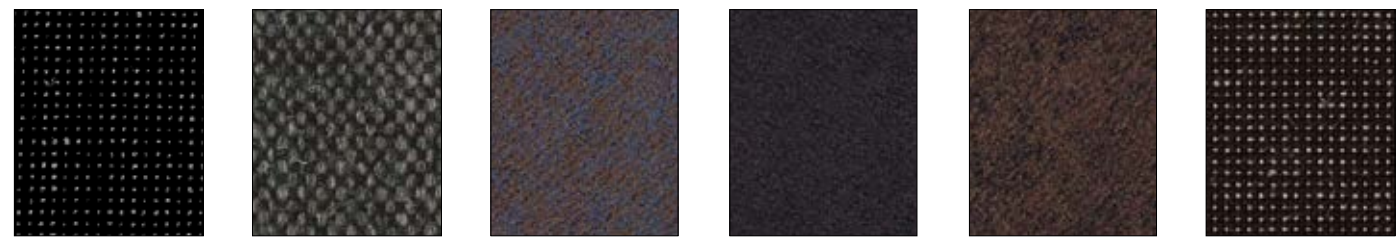
**Synergy** Pair LDS31   **Synergy** Bond LDS24   **Synergy** Team LDS21   **Synergy** Affix LDS32   **Main Line Flax** Archway MLF02   **Patina** Aged PAT02



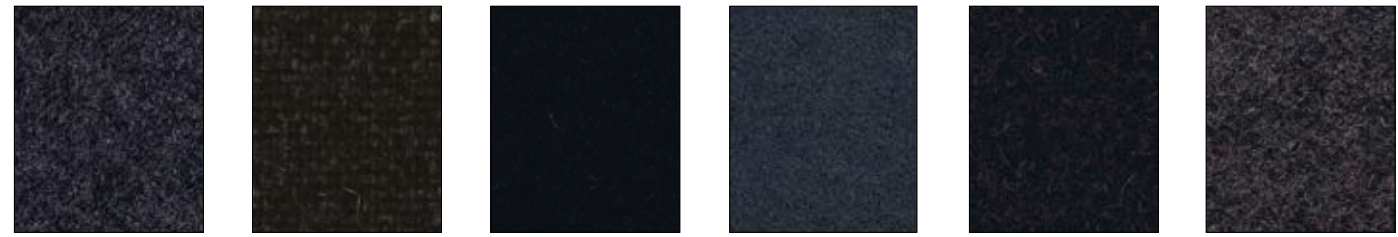
**Patina** Chiselled PAT24   **Synergy** Partner LDS16   **Synergy** Tag LDS33   **Main Line Flax** Morden MLF12   **Main Line Flax** Bank MLF23   **Synergy** Hook LDS29



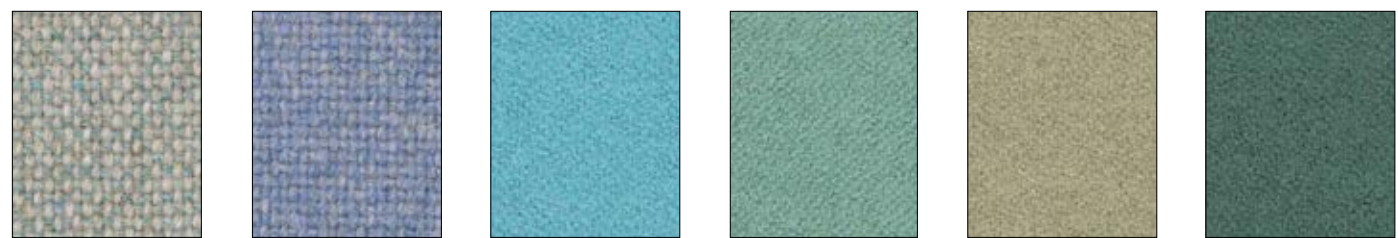
**Patina** Anneal PAT35   **Synergy** Chemistry LDS35   **Main Line Flax** Camden MLF26   **Main Line Flax** Stockwell MLF15   **Synergy** Linea LDS37   **Patina** Timeworn PAT08



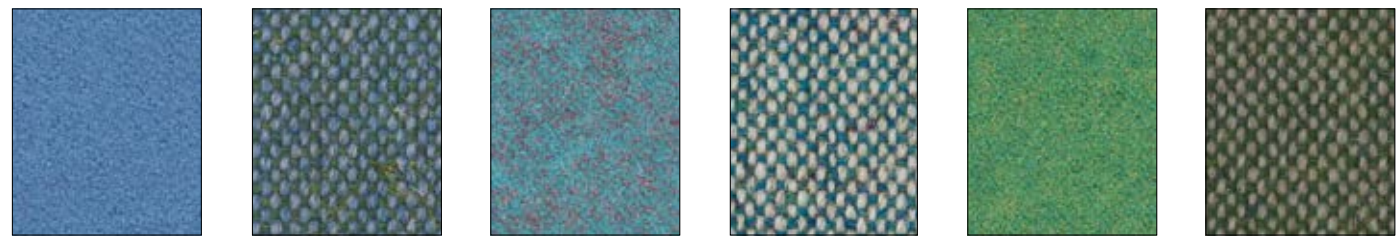
**Patina** Toughened PAT20   **Main Line Flax** Temple MLF16   **Synergy** Unity LDS38   **Synergy** Bridge LDS26   **Synergy** Collective LDS39   **Patina** Seasoned PAT03



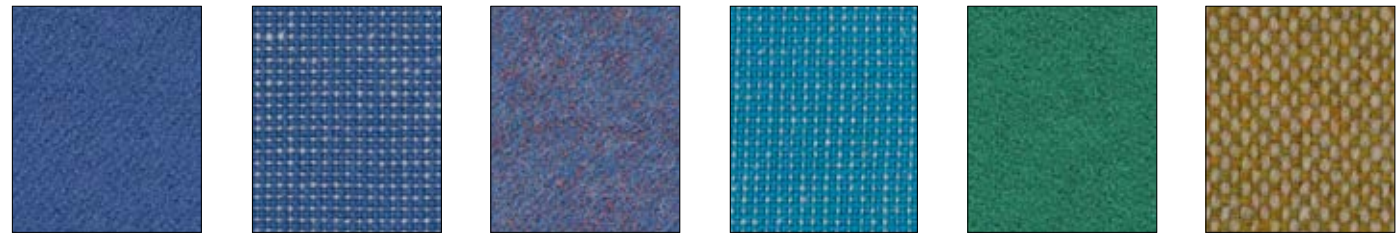
**Synergy** Mix LDS17   **Main Line Flax** Edgware MLF28   **Synergy** Seek LDS27   **Synergy** Compound LDS25   **Synergy** Co-operate LDS40   **Synergy** Wed LDS34



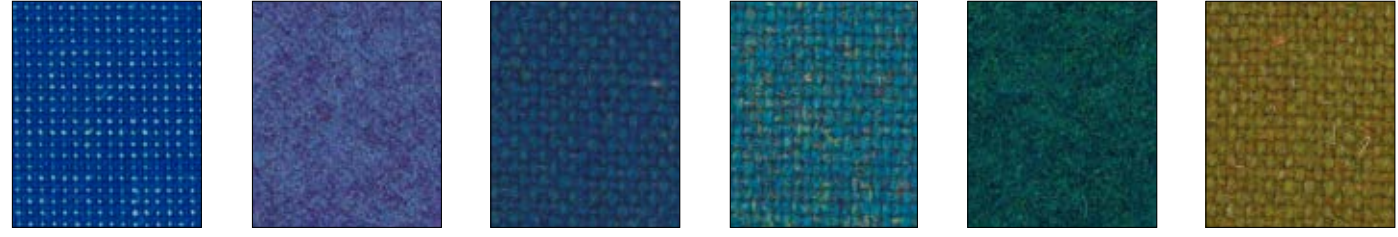
**Main Line Flax** Newbury MLF10   **Main Line Flax** Waterloo MLF21   **Synergy** Support LDS55   **Synergy** Regard LDS54   **Synergy** Bracket LDS23   **Synergy** Append LDS49



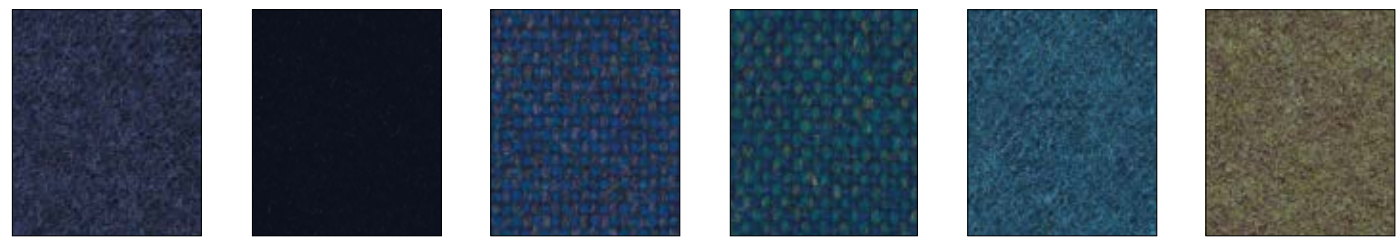
**Synergy** Huddle LDS65   **Main Line Flax** Bethnal MLF25   **Synergy** Kinship LDS56   **Main Line Flax** Bayswater MLF24   **Synergy** Pact LDS53   **Main Line Flax** Monument MLF09



**Synergy** Guild LDS63   **Patina** Salvaged PAT06   **Synergy** Order LDS64   **Patina** Languish PAT31   **Synergy** Comply LDS52   **Main Line Flax** Kensington MLF07



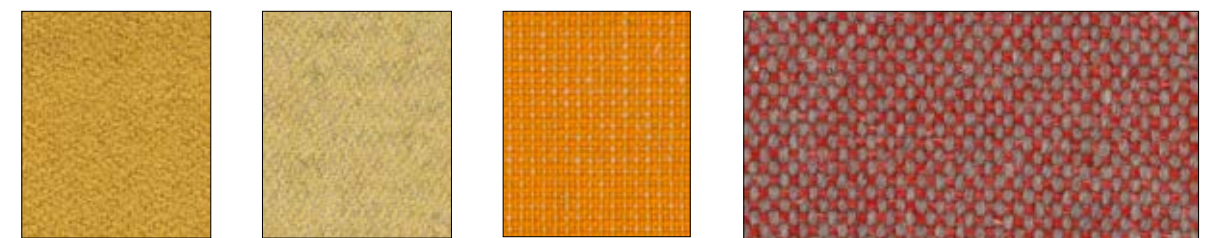
**Patina** Seamless PAT23   **Synergy** Collaborate LDS68   **Main Line Flax** Holborn MLF05   **Main Line Flax** Stanmore MLF37   **Synergy** League LDS50   **Main Line Flax** Finsbury MLF30



**Synergy** Alike LDS62   **Synergy** Sync LDS69   **Main Line Flax** Brompton MLF35   **Main Line Flax** Pimlico MLF34   **Synergy** Group LDS59   **Synergy** Interfuse LDS48



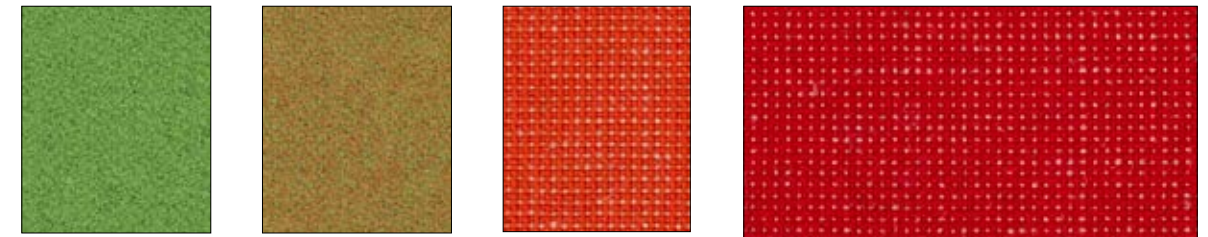
**Patina** Rippled PAT19   **Main Line Flax** Victoria MLF19   **Main Line Flax** Tower MLF36   **Synergy** Accord LDS60   **Main Line Flax** Greenford MLF32   **Synergy** Couple LDS41



**Synergy** Lateral LDS28   **Synergy** Summon LDS45   **Patina** Glisten PAT25   **Main Line Flax** Barbican MLF03



**Synergy** Gather LDS46   **Main Line Flax** Tooting MLF17   **Main Line Flax** Lambeth MLF08   **Main Line Flax** Barbican MLF03



**Synergy** Integrate LDS47   **Synergy** Marry LDS43   **Patina** Irregular PAT09   **Main Line Flax** Barbican MLF03



**Main Line Flax** Tufnell MLF18   **Main Line Flax** Goldhawk MLF31   **Synergy** Contribution LDS75   **Patina** Braise PAT27



**Patina** Flecked PAT38   **Patina** Inlay PAT37   **Synergy** Combo LDS77   **Synergy** Cordial LDS78



**Patina** Restored PAT07   **Synergy** Intertwine LDS42   **Synergy** Success LDS76   **Synergy** Cordial LDS78