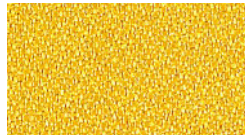


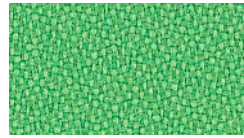
Momentum Essentials: Contract Upholstery Solutions for Dauphin



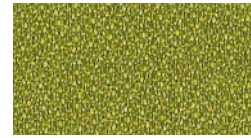
ORIGIN ALLOY



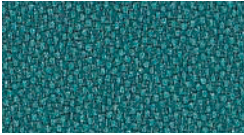
EUREKA



CLOVER



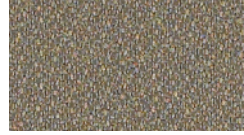
GAIA



TIDE



POPPY



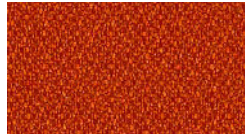
ARUNDEL



AVALON



INDIGO



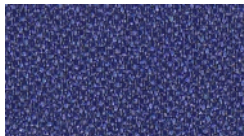
MIKAN



SEED



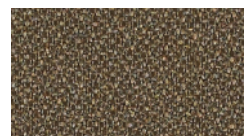
IRON



EURO



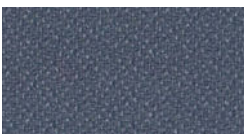
FEZ



TWINE



STATELY



SODALITE



GARNET



MANTA



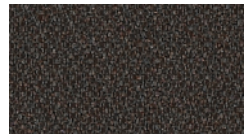
STEEL



SAPPHIRE



AMETHYST



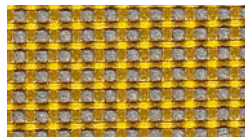
BASALT



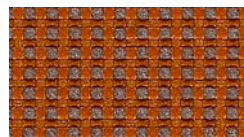
JET



GRID KHAKI



SUNBEAM



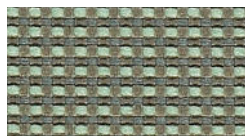
EMBER



SCARLET



CHROME



GLACIER



SURF



ORCHID



APPLE



INDIGO



FLINT



JET



TRADITION STERLING



SUN



THEATER



WELD



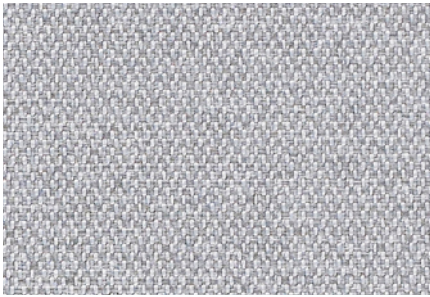
WASH



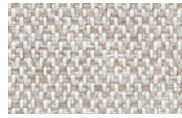
CLASS



HIDDEN



INFINITY ALUMINUM



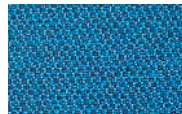
DOVE



PAPAYA



PEWTER



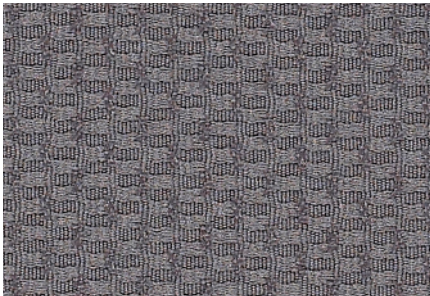
CAPRI



BEYOND



GRAPHITE



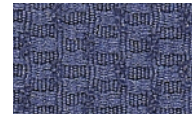
WIDGET GRAPHITE



FOG



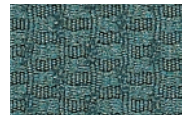
PERIDOT



BAJA



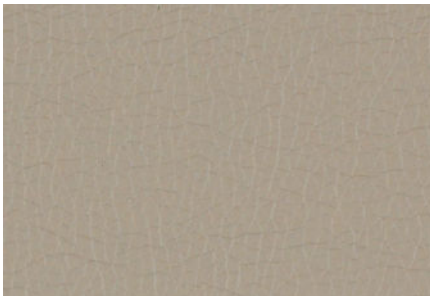
BRISTOL



JUNIPER



BEDROCK



CANTER EPU QUARRY



SAND DOLLAR



EARTH



STORM



NIMBUS



INK



ONYX



BEELINE EPU FORGE



FOSSIL



ORIOLE



PORTOBELLO



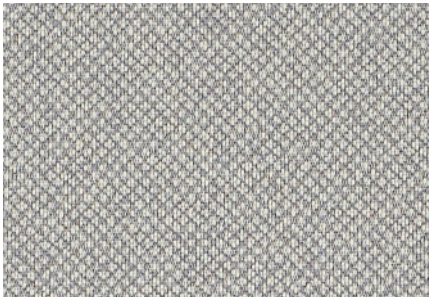
GEYSER



TIDAL



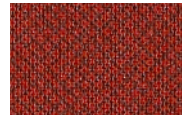
ECLIPSE



TRIBECA CV CLOUD



MICA



RUBINE



DOWNPOUR



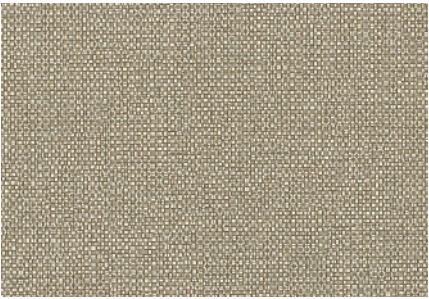
CASCADE



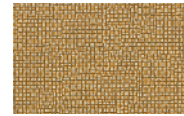
MARINER



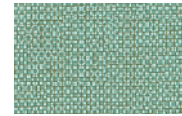
SHADOW



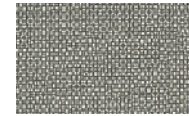
DEXTER EPU PUMICE



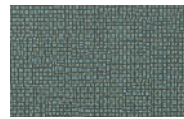
TOBACCO



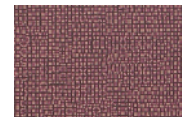
SPLASH



HAUTE



BALTIC



FIG



GRAPHITE



BETA PEARL



MALT



DECK



CINDER



IVY



CADET



GRAPHITE



PIP PEWTER



ZEST



LAKE



CALICO



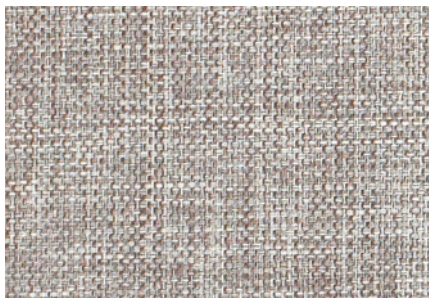
HENNA



AMBER



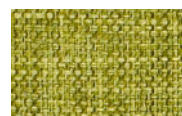
PEPPER



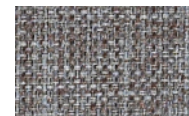
COVER CLOTH PLATINUM



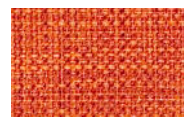
CYAN



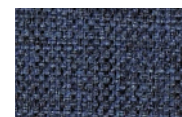
SORREL



VESPER



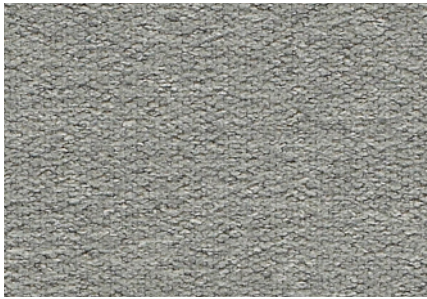
ZEST



INDIGO



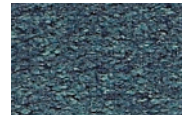
GRAPHITE



FAUX FELT STONE



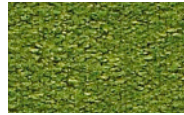
PEBBLE



POOL



VIBRANT



SPROUT



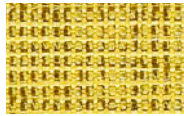
QUAIL



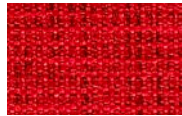
CHARCOAL



HOBNOB ASH



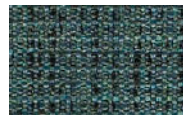
LIMON



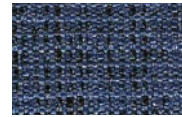
ALARM



CANNON



TEAL



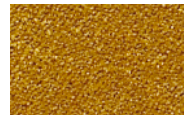
DEPTH



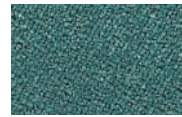
CARBON



FAUX MO STONE



OCHRE



SPA



SAPPHIRE



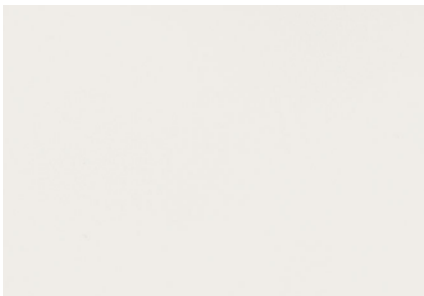
OAT



MERLOT



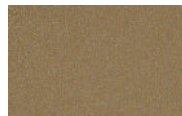
SHALE



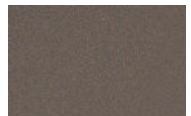
SILICA CUMULUS



APPLETINI



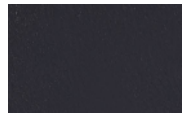
QUARTZ



ALLOY



HAZE



GALLANT



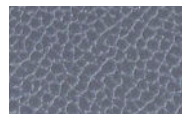
NERO



SILICA LEATHER PEWTER



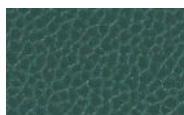
DOVE



DENIM



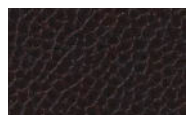
DRIFTWOOD



JUNIPER



INK



ECLIPSE

TECHNICAL INFORMATION

BEELINE EPU

Content: **100% EPU Polyurethane**
Width: 54"
Weight: 25.12 oz./linear yd.
Surface Abrasion: 900,000 Double Rubs

Backing: Polyester
Finish: None
Cleaning Code: W - Bleach Cleanable (4:1)
A ☆ ☯ ☼ 🍃 *

Approx. Repeat: None
Directional: No
Shown Railroaded: No

BETA

Content: **67% Repreve® Recycled Polyester, 33% Polyester**
Width: 55"
Weight: 30.88 oz./linear yd.
Surface Abrasion: 190,000 Double Rubs

Backing: Acrylic
Finish: None
Cleaning Code: WS
A ☆ ☯ ☼ 🍃 *

Approx. Repeat: 0.25" L x .125" W
Directional: No
Shown Railroaded: No

CANTER EPU

Content: **100% EPU Polyurethane**
Width: 54"
Weight: 27.52 oz./linear yd.
Surface Abrasion: 1,000,000 Double Rubs

Backing: Polyester
Finish: None
Cleaning Code: W - Bleach Cleanable (4:1)
A ☆ ☯ ☼ 🍃 *

Approx. Repeat: None
Directional: No
Shown Railroaded: No

COVER CLOTH

Content: **56% Repreve® Post Consumer Recycled Polyester, 44% Polyester**
Width: 59"
Weight: 14.08 oz./linear yd.
Surface Abrasion: 200,000 Double Rubs

Backing: None
Finish: Crypton® GREEN
Cleaning Code: W - Bleach Cleanable (10:1)
A ☆ ☯ ☼ 🍃 *

Approx. Repeat: None
Directional: No
Shown Railroaded: No

DEXTER EPU

Content: **100% EPU Polyurethane**
Width: 54"
Weight: 29.76 oz./linear yd.
Surface Abrasion: 285,000 Double Rubs

Backing: Polyester
Finish: None
Cleaning Code: W - Bleach Cleanable (4:1)
A ☆ ☯ ☼ 🍃 *

Approx. Repeat: 20" L x 9.5" W
Directional: No
Shown Railroaded: No

FAUX FELT

Content: **62% Repreve® Post Consumer Recycled Polyester, 38% Polyester**
Width: 56"
Weight: 17.12 oz./linear yd.
Surface Abrasion: 75,000 Double Rubs

Backing: None
Finish: Crypton® GREEN
Cleaning Code: WS - Bleach Cleanable (10:1)
A ☆ ☯ ☼ 🍃 *

Approx. Repeat: None
Directional: No
Shown Railroaded: No

REDUCED ENVIRONMENTAL IMPACT

GREENGUARD Gold Certified products are tested for low chemical emissions to standard UL 2818. For more information, visit UL.com/gg.

FLAMMABILITY 🍃 *

California Technical Bulletin 117-2013

NFPA 260 Class 1

UFAC Class 1

CLEANING INFORMATION

W: Water-based foam or cleaner.

W-S: Water-based cleaning agents or foam.

Bleach Cleanable (4:1) - 1 part bleach, 4 parts water = 20% bleach, 80% water solution. Always rinse promptly with clean water after applying the bleach solution.

Bleach Cleanable (10:1) - 1 part bleach, 9 parts water = 10% bleach, 90% water solution. Do not clean/disinfect fabric for longer than 10 minutes using 10% bleach solution. Always rinse promptly with clean water after applying the bleach solution. Failure to do so will void any and all warranties.

ADDITIONAL INFORMATION

*ACT Registered Certification Marks

Custom Capabilities: All patterns can be custom colored. Minimum yardage applies.

Memo Samples: Please keep this card intact. Individual memo samples can be ordered on our website or by contacting customer service.

Color Matching: Momentum Textiles always attempts to ship a satisfactory commercial match. Because of industry standard dye lot variation, colors may not match exactly.

Specifications: Specifications are correct at the time of printing. Current specifications are available on our website.

For information or assistance with products or services, call Dauphin at 800.631.1186 or refer to our website, www.dauphin.com.

TECHNICAL INFORMATION

FAUX MO

Content: **58% Repreve® Post Consumer Recycled Polyester, 42% Polyester**
Width: 55"
Weight: 25.6 oz./linear yd.
Surface Abrasion: 200,000 Double Rubs

Backing: None
Finish: Crypton® GREEN
Cleaning Code: WS - Bleach Cleanable (10:1)
A ☆ ☹ ☀ 🌿 *

Approx. Repeat: None
Directional: No
Shown Railroaded: No

GRID

Content: **64% Repreve® Post Consumer Recycled Polyester, 36% Polyester**
Width: 54"
Weight: 20 oz./linear yd.
Surface Abrasion: 160,000 Double Rubs

Backing: Acrylic
Finish: None
Cleaning Code: WS
A ☆ ☹ ☀ 🌿 *

Approx. Repeat: .0625" L x .125" W
Directional: No
Shown Railroaded: No

HOBNOB

Content: **51% Recycled Polyester, 49% Polyester**
Width: 56"
Weight: 22.72 oz./linear yd.
Surface Abrasion: 87,000 Double Rubs

Backing: None
Finish: Crypton® GREEN
Cleaning Code: W - Bleach Cleanable (10:1)
A ☆ ☹ ☀ 🌿 *

Approx. Repeat: None
Directional: No
Shown Railroaded: No

INFINITY

Content: **74% Post Consumer Recycled Polyester, 26% Polyester**
Width: 54"
Weight: 16.96 oz./linear yd.
Surface Abrasion: 200,000 Double Rubs

Backing: Acrylic
Finish: C-Zero
Cleaning Code: WS
A ☆ ☹ ☀ 🌿 *

Approx. Repeat: .125" L x .625" W
Directional: No
Shown Railroaded: No

ORIGIN

Content: **100% Post Consumer Recycled Polyester**
Width: 58"
Weight: 15.2 oz./linear yd.
Surface Abrasion: 282,000 Double Rubs

Backing: Acrylic
Finish: None
Cleaning Code: WS
A ☆ ☹ ☀ 🌿 *

Approx. Repeat: None
Directional: No
Shown Railroaded: No

PIP

Content: **53% Repreve® Recycled Polyester, 47% Polyester**
Width: 55"
Weight: 28 oz./linear yd.
Surface Abrasion: 200,000 Double Rubs

Backing: Acrylic
Finish: None
Cleaning Code: WS
A ☆ ☹ ☀ 🌿 *

Approx. Repeat: .25" L x .125" W
Directional: No
Shown Railroaded: No

REDUCED ENVIRONMENTAL IMPACT

GREENGUARD Gold Certified products are tested for low chemical emissions to standard UL 2818. For more information, visit UL.com/gg.

FLAMMABILITY 🌿 *

California Technical Bulletin 117-2013

NFPA 260 Class 1

UFAC Class 1

CLEANING INFORMATION

W: Water-based foam or cleaner.

W-S: Water-based cleaning agents or foam.

Bleach Cleanable (4:1) - 1 part bleach, 4 parts water = 20% bleach, 80% water solution. Always rinse promptly with clean water after applying the bleach solution.

Bleach Cleanable (10:1) - 1 part bleach, 9 parts water = 10% bleach, 90% water solution. Do not clean/disinfect fabric for longer than 10 minutes using 10% bleach solution. Always rinse promptly with clean water after applying the bleach solution. Failure to do so will void any and all warranties.

ADDITIONAL INFORMATION

*ACT Registered Certification Marks

Custom Capabilities: All patterns can be custom colored. Minimum yardage applies.

Memo Samples: Please keep this card intact. Individual memo samples can be ordered on our website or by contacting customer service.

Color Matching: Momentum Textiles always attempts to ship a satisfactory commercial match. Because of industry standard dye lot variation, colors may not match exactly.

Specifications: Specifications are correct at the time of printing. Current specifications are available on our website.

For information or assistance with products or services, call Dauphin at 800.631.1186 or refer to our website, www.dauphin.com.

TECHNICAL INFORMATION

SILICA

Content: **100% Silicone**
Width: 54"
Weight: 25.6 oz./linear yd.
Surface Abrasion: 365,000 Double Rubs

Backing: Polyester
Finish: None
Cleaning Code: WS - Bleach Cleanable (4:1)
☒ ☆ ☹ ☼ ☹ *

Approx. Repeat: None
Directional: No
Shown Railroaded: No

SILICA LEATHER

Content: **100% Silicone**
Width: 54"
Weight: 25.12 oz./linear yd.
Surface Abrasion: 210,000 Double Rubs

Backing: Polyester
Finish: None
Cleaning Code: WS - Bleach Cleanable (4:1)
☒ ☆ ☹ ☼ ☹ *

Approx. Repeat: None
Directional: No
Shown Railroaded: No

TRADITION

Content: **72% Post Consumer Recycled Polyester, 28% Polyester**
Width: 54"
Weight: 20.32 oz./linear yd.
Surface Abrasion: 200,000 Double Rubs

Backing: Acrylic
Finish: C-Zero
Cleaning Code: WS
☒ ☆ ☹ ☼ ☹ *

Approx. Repeat: .125" L x .125" W
Directional: No
Shown Railroaded: No

TRIBECA CV

Content: **100% Clean Vinyl/Phthalate Free**
Width: 54"
Weight: 30.72 oz./linear yd.
Surface Abrasion: 100,000 Double Rubs

Backing: Polyester
Finish: Protective Topcoat
Cleaning Code: W - Bleach Cleanable (10:1)
☒ ☆ ☹ ☼ ☹ *

Approx. Repeat: None
Directional: No
Shown Railroaded: No

WIDGET

Content: **83% Post Consumer Recycled Polyester,
17% Post Industrial Recycled Polyester**
Width: 54"
Weight: 10.4 oz./linear yd.
Surface Abrasion: 100,000 Double Rubs

Backing: None
Finish: None
Cleaning Code: WS
☒ ☆ ☹ ☼ ☹ *

Approx. Repeat: .50" L x .25" W
Directional: No
Shown Railroaded: No

REDUCED ENVIRONMENTAL IMPACT

GREENGUARD Gold Certified products are tested for low chemical emissions to standard UL 2818. For more information, visit UL.com/gg.

FLAMMABILITY ☹ *

California Technical Bulletin 117-2013

NFPA 260 Class 1

UFAC Class 1

CLEANING INFORMATION

W: Water-based foam or cleaner.

W-S: Water-based cleaning agents or foam.

Bleach Cleanable (4:1) - 1 part bleach, 4 parts water = 20% bleach, 80% water solution. Always rinse promptly with clean water after applying the bleach solution.

Bleach Cleanable (10:1) - 1 part bleach, 9 parts water = 10% bleach, 90% water solution. Do not clean/disinfect fabric for longer than 10 minutes using 10% bleach solution. Always rinse promptly with clean water after applying the bleach solution. Failure to do so will void any and all warranties.

ADDITIONAL INFORMATION

*ACT Registered Certification Marks

Custom Capabilities: All patterns can be custom colored. Minimum yardage applies.

Memo Samples: Please keep this card intact. Individual memo samples can be ordered on our website or by contacting customer service.

Color Matching: Momentum Textiles always attempts to ship a satisfactory commercial match. Because of industry standard dye lot variation, colors may not match exactly.

Specifications: Specifications are correct at the time of printing. Current specifications are available on our website.

For information or assistance with products or services, call Dauphin at 800.631.1186 or refer to our website, www.dauphin.com.

DAUPHIN

HumanDesign® Group

100 Fulton Street Boonton, NJ 07005 TEL: 800.631.1186 FAX: 800.220.3844 EMAIL: info@dauphin.com

www.dauphin.com

D.M.EC.08211.5M © Dauphin Furniture

For memo samples please contact.

MOMENTUM

T E X T I L E S

800-366-6839
memosamples.com