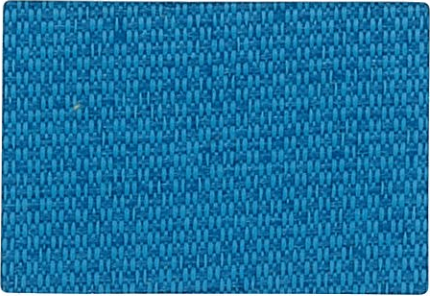


Momentum Textiles Solid Basics



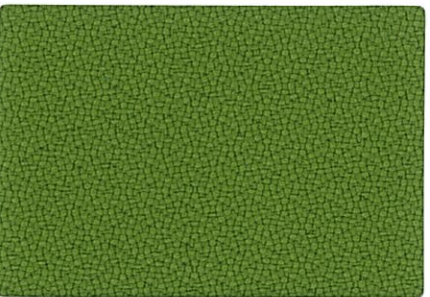
Silica Cumulus



Marathon Cyan



Cover Cloth Platinum



Origin Gaia



Silica Leather Denim



Lemon



Quartz



Tint



Sprite



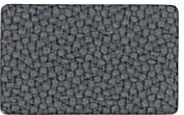
Sorrel



Taupe



Caraway



Iron



Almond



Lichen



Firelight



Gallant



Flax



Toile



Cyan



Vesper



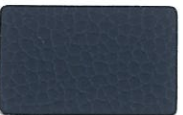
Mikan



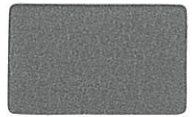
Sapphire



Dove



Ink



Alloy



Nero



Pinot



Storm



Indigo



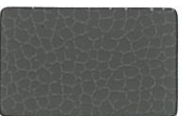
Graphite



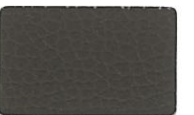
Garnet



Jet



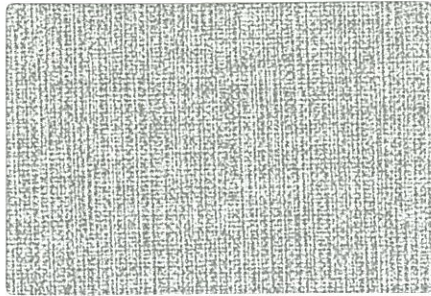
Shadow



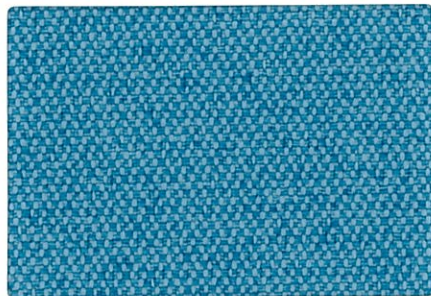
Umber



Faux Mo Limon



Whit EPU Platinum



Infinity Rinse



Faux Felt Pool



Canter EPU Ink



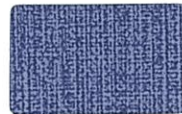
Shell



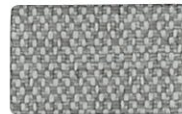
Wheat



Crown



Delft



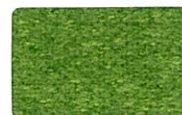
Dove



Links



Stone



Sprout



Sand



Earth



Stone



Persimmon



Inland



Nightfall



Papaya



Capri



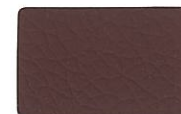
Pumice



Lagoon



Quarry



Bordeaux



Spa



Sapphire



Driftwood



Jet



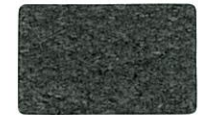
Gull



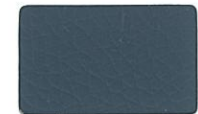
Eclipse



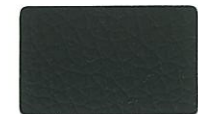
Vibrant



Charcoal



Ballad



Onyx

TECHNICAL INFORMATION

CANTER EPU

Content: 100% EPU Polyurethane
 Width: 54"
 Weight: 27.52 oz./linear yd.
 Surface Abrasion: 1,000,000 Double Rubs

Backing: Polyester
 Finish: None
 Cleaning Code: W - Bleach Cleanable (4:1)
 A ☆ ● ✨ ✨ *

Approx. Repeat: None
 Directional: No
 Shown Railroaded: No

COVER CLOTH

Content: 56% Repreve® Post Consumer Recycled Polyester, 44% Polyester
 Width: 59"
 Weight: 14.08 oz./linear yd.
 Surface Abrasion: 200,000 Double Rubs

Backing: None
 Finish: Crypton® GREEN
 Cleaning Code: W - Bleach Cleanable (10:1)
 A ☆ ● ✨ ✨ *

Approx. Repeat: None
 Directional: No
 Shown Railroaded: No

FAUX FELT

Content: 62% Repreve® Post Consumer Recycled Polyester, 38% Polyester
 Width: 56"
 Weight: 17.12 oz./linear yd.
 Surface Abrasion: 75,000 Double Rubs

Backing: None
 Finish: Crypton® GREEN
 Cleaning Code: WS - Bleach Cleanable (10:1)
 A ☆ ● ✨ ✨ *

Approx. Repeat: None
 Directional: No
 Shown Railroaded: No

FAUX MO

Content: 58% Repreve® Post Consumer Recycled Polyester, 42% Polyester
 Width: 55"
 Weight: 25.6 oz./linear yd.
 Surface Abrasion: 200,000 Double Rubs

Backing: None
 Finish: Crypton® GREEN
 Cleaning Code: WS - Bleach Cleanable (10:1)
 A ☆ ● ✨ ✨ *

Approx. Repeat: None
 Directional: Yes
 Shown Railroaded: No

INFINITY

Content: 74% Post Consumer Recycled Polyester, 26% Polyester
 Width: 57"
 Weight: 16.96 oz./linear yd.
 Surface Abrasion: 200,000 Double Rubs

Backing: Acrylic
 Finish: C-Zero
 Cleaning Code: WS
 A ☆ ● ✨ ✨ *

Approx. Repeat: 0.125" L x .625" W
 Directional: No
 Shown Railroaded: No

MARATHON

Content: 75% Post Consumer Recycled Polyester, 25% Polyester
 Width: 57"
 Weight: 15.52 oz./linear yd.
 Surface Abrasion: 200,000 Double Rubs

Backing: Acrylic
 Finish: C-Zero
 Cleaning Code: WS
 A ☆ ● ✨ ✨ *

Approx. Repeat: 0.125" L x 0.125" W
 Directional: No
 Shown Railroaded: No

ORIGIN

Content: 100% Post Consumer Recycled Polyester
 Width: 58"
 Weight: 15.2 oz./linear yd.
 Surface Abrasion: 282,000 Double Rubs

Backing: Acrylic
 Finish: None
 Cleaning Code: WS
 A ☆ ● ✨ ✨ *

Approx. Repeat: None
 Directional: No
 Shown Railroaded: No

SILICA

Content: 100% Silicone
 Width: 54"
 Weight: 25.6 oz./linear yd.
 Surface Abrasion: 365,000 Double Rubs

Backing: Polyester
 Finish: None
 Cleaning Code: WS - Bleach Cleanable (4:1)
 A ☆ ● ✨ ✨ *

Approx. Repeat: None
 Directional: No
 Shown Railroaded: No

SILICA LEATHER

Content: 100% Silicone
 Width: 54"
 Weight: 25.12 oz./linear yd.
 Surface Abrasion: 210,000 Double Rubs

Backing: Polyester
 Finish: None
 Cleaning Code: WS - Bleach Cleanable (4:1)
 A ☆ ● ✨ ✨ *

Approx. Repeat: None
 Directional: No
 Shown Railroaded: No

WHIT EPU

Content: 100% EPU Polyurethane
 Width: 54"
 Weight: 24 oz./linear yd.
 Surface Abrasion: 500,000 Double Rubs

Backing: Polyester
 Finish: None
 Cleaning Code: W - Bleach Cleanable (4:1)
 A ☆ ● ✨ ✨ *

Approx. Repeat: None
 Directional: No
 Shown Railroaded: No

REDUCED ENVIRONMENTAL IMPACT

GREENGUARD Gold Certified products are tested for low chemical emissions to standard UL 2818. For more information, visit UL.com/gg.

FLAMMABILITY ✨ *

California Technical Bulletin 117-2013

NFPA 260 Class 1

UFAC Class 1

CLEANING INFORMATION

W: Water-based foam or cleaner.

W-S: Water-based cleaning agents or foam.

Bleach Cleanable (4:1) - 1 part bleach, 4 parts water = 20% bleach, 80% water solution. Always rinse promptly with clean water after applying the bleach solution.

Bleach Cleanable (10:1) - 1 part bleach, 9 parts water = 10% bleach, 90% water solution. Do not clean/disinfect fabric for longer than 10 minutes using 10% bleach solution. Always rinse promptly with clean water after applying the bleach solution. Failure to do so will void any and all warranties.

ADDITIONAL INFORMATION

*ACT Registered Certification Marks

Custom Capabilities: All patterns can be custom colored. Minimum yardage applies.

Memo Samples: Please keep this card intact. Individual memo samples can be ordered on our website or by contacting customer service.

Color Matching: Momentum Textiles always attempts to ship a satisfactory commercial match. Because of industry standard dye lot variation, colors may not match exactly.

Specifications: Specifications are correct at the time of printing. Current specifications are available on our website.

For information or assistance with products or services, call Dauphin at 800.631.1186 or refer to our website, www.dauphin.com.

DAUPHIN

100 Fulton Street Boonton, NJ 07005 TEL: 800.631.1186 FAX: 800.220.3844 EMAIL: info@dauphin.com

www.dauphin.com

D.MFC.0619 2M © Dauphin Furniture

For memo samples please contact.

MOMENTUM
 T E X T I L E S

800-366-6839

memosamples.com